

# Greenbelt News Review

AN INDEPENDENT NEWSPAPER

Volume 45, Number 8 P.O. Box 68, Greenbelt, Maryland 20770 Thursday, January 7, 1982

## GHI Board Studies Phase II Rehab Schedule, Specifications, Procedures

by Sandra Surber Smith

A revised schedule for bids and contracts for Phase II of the rehabilitation program and operations of Greenbelt Homes, Inc. Development Corporation (GHIDC) occupied the Greenbelt Homes, Inc. Board of Directors at its regular meeting on December 17.

### Rehab schedule

In question was a schedule which called for drawings and specifications for the Phase II work to be delivered on December 23, reviewed by GHI in the next 6 days over the holidays, and revised and printed by January 4. Bids would be received by February 4. Several board members felt this provided insufficient time for GHI to review and make necessary changes in the specs which will be the "Bible" by which phase II work is directed. Director Steve Curtis felt that there were still serious problems in the specifications particularly relating to the electric heat conversion. When asked by General Manager Tim Mitter to be specific, Curtis mentioned the baseboard heating units which he thought were oversized—twice as large as they need be. Mitter felt that Curtis should inform Stan Sersen, Staff Architect, who was at that moment working on the electric heat requirements. When Board President Jim Smith suggested a small subcommittee to review the specifications Director Margaret Hogensen objected. She felt that there were not only technical matters involved with the specifications but also policy matters which would require the review and approval of the entire board. It was finally agreed to hold a working meeting of the entire board to review specifications on December 28. Management indicated that any subsequent changes in the specs which the board wished to make could be sent as amendments to all bidders, as late as the end of January.

### GHIDC

Tom Lynch, project superin-

tendent of GHIDC, reported on the actions of GHIDC to gear up for Phase II rehab and answered questions from the board. He listed the new inspectors hired by GHIDC—two plumbing, two electric, one siding and one general utility inspector. Director Frank Gervasi was critical of some of the siding work on the frame homes which has already passed GHI inspection. He passed around some pictures which showed sloppy work around doorways and windows. GHI Administrative Chief Gary Morningstar said that some problems with siding appear only after installation or on certain, for example, wet days and that siding problems can be fixed even after payment. Curtis felt that members should be alerted to inspect siding on their homes and report any problems.

New multi-color inspection stickers have been designed and will be used by GHIDC to mark each stage of rehab work. Morningstar said that the stickers would be placed on top of the previous stickers so that homes would not look like well-travelled luggage. Lynch then described the procedure for converting to electric heat and hot water. This calls for 5 visits to each home. Curtis questioned the need to enter so many times. Management replied that it would not be possible to perform several operations on one visit, that workers would be in each other's way, and that certain operations have to be performed in sequence. Curtis still felt that some visits could be combined and that the more times GHI must gain access to a member's unit the more potential problems there are.

In an earlier action the Board requested changes to a resolution counsel prepared to clarify GHI's authority to enter a unit to complete heat conversion. Management had felt this resolution necessary since obstructions or difficulties in gaining access to a home could wreck a very tight heat conversion schedule. The resolution was referred again to counsel for revision.

### Other action

Upon request of the Personnel Committee the board authorized \$7,000 to renovate and redecorate the employees' lunchroom. This would include new furniture, cabinets and sink, microwave oven and other improvements.

Two members made requests to the GHI board. In a complicated situation involving a number of improvements to a unit, the board was asked to approve an exemption to the deck size restriction. This was granted. Management is also working with this member and the county on a number of other violations, both electrical and structural. While approving this one case, Smith cautioned members from thinking that "the way to get something done is to do it and then go to the Board for approval." There was some feel-

ing that as GHI tightens its inspections and procedures that fewer violations will occur and that members will be more aware of the necessary steps to follow. GHI has now identified some 25 illegal additions.

Another member had an inspection problem which centered on the rather lenient resale inspection when she purchased her home and the more stringent inspection currently conducted. The member felt that she was a victim of changing policy and that GHI was responsible. The board referred this problem to management indicating that some of the problems might fall under maintenance and would be corrected by GHI. However, other conditions which must be corrected before resale approval will be the responsibility of the member. The board felt that GHI's taking responsibility for correcting all problems resulting from policy and other changes would be too great a financial burden for the corporation. The board adjourned, setting its next regular meeting for January 7.

### WHAT GOES ON

Tues., Jan. 12, City Council Work Session on Lake-Park Master Plan.

Thurs., Jan. 14 - GHI Board Meeting, Hamilton Place.

### Concert at Utopia

by Corinne Comulada

The Utopia Theatre, Greenbelt Cultural Arts Center, 129 Centerway, in conjunction with the Sigma Alpha Iota Sorority of the University of Maryland and the University's School of Music, will present a classical music program on January 9 at 8:15 p.m.

Members of this sorority have all appeared professionally and in the future plan to perform with opera companies and symphonies. Proceeds from these performances go to music scholarships as well as musical translation into braille for blind musicians.

Mary Carrigan, whose outstanding performance brightened the Christmas variety program, will be a featured performer.

Greenbelters will be able to enjoy this first-rate program for a reasonable price. For further information, call 345-3916, 345-4487 or 474-7763.

### Recreation Review

In-person registration, first-come first-serve basis. All registrants may sign up at either center for all the classes.

Monday, Jan. 11, 10 a.m. to 4 p.m. and 7-8 p.m., Youth Center. Tuesday, Jan. 12, 10 a.m. to 4 p.m. Youth Center and 7-8 p.m. SHL Rec. Center; and Wednesday, Jan. 13, 10 a.m. to 4 p.m. Youth Center. (See ad for more information.)

### Democratic Club

The Democratic Club meets Fri. Jan. 15, at 8 p.m. in the Greenbriar Community Building.

## Ten Top Stories of 1981

Compiled by News Review Staff Writers

Greenbelt in the year 1981 feels the impact of an accelerating pace in commercial development, and an increased rate of crime. It also experiences rejuvenation of the city's oldest residential structures and the closing of one of its oldest schools. While city council membership stays quite stable through an election year, Greenbelt is threatened with inadequate representation at the county level. The task our city faces is how to adjust to these and other pressures of the eighties without altering its unique character as a good place to live.

### Development

The Greenbelt skyline changes drastically. During 1981 a second large office building is completed and a third is under construction in the Capital Office Park. On the Golden Triangle, the first Prudential office building and the Pepco substation near completion. Stores and restaurants are added to Greenway Shopping Center and the 15-story Maryland Trade Center building is completed. Even a gaudy amusement arcade is erected in the Beltway Plaza parking lot.

During 1981, plans begin to mature for even greater changes in the future. Capital Office Park will have three or four office buildings and a hotel. Prudential projects five more office buildings on the Golden Triangle. In the to-be-annexed area south of Greenway Shopping Center two more 16-story buildings will rise, plus a smaller office building, a banquet facility and a motel.

### Rezoning

A three-year-long process to rezone Parcels 3 and 4 on the city's northern boundary ends in November with a victory for Greenbelt. The owners wanted vacant land flanking Research Road opened to townhouse development, but by court decision must settle for zoning for single-family homes, as urged by Greenbelt.

Another lengthy effort concludes when vacant land south of Greenway Shopping Center is opened for development and annexation into the city by late-in-the-year decisions of the Prince Georges County Council. These decisions include the granting of commercial zoning for the Sunstates (Coakley & Williams) and Baker-Witt (Western Development) properties west of Hanover Parkway, and of townhouse zoning for the Baker-Witt property east of Hanover. Both decisions are supported by county establishment of a special taxing district to pay for extension of Hanover Parkway south to Good Luck Road — an improvement which the city has deemed indispensable for further development.

At year's end, Greenbelt is confronted with revival of an earlier unresolved zoning issue of major proportions, involving the 112 acres of privately owned land in Parcels 1 and 2 lying between the Baltimore-Washington Parkway and Greenbelt Homes, Inc. The zoning density ultimately allowed on this area will be of critical importance to the neighboring GHI housing cooperative, one of the first planned communities in America and now an Historic District.

### County Redistricting

As the year ends, the city prepares to seek judicial relief from the redistricting measure approved by county council. This act places Bowie and Greenbelt in the same council district despite strong citizen protests. Greenbelters support the revised Ennis Plan, grouping Greenbelt with New Carrollton and Riverdale, both nearby communities with similar aspirations and problems. This goal is incompatible with desire of majority on county council to arrange districts to improve their own chances for re-election. The resulting Bowie-Greenbelt district resembles the original gerrymander.


### Greenbelt Homes

Rehabilitation is the all-encompassing issue for Greenbelt Homes, Inc. (GHI). This year's major achievement is securing financing for Phase II of the renovation program. In May the membership approved a \$13.7 million loan from the National Consumer Cooperative Bank for rehab. The Co-op Bank loan has fewer strings attached than revenue bonds considered earlier. A vinyl siding contract is signed in late summer and the first phase of rehab work nears completion. To comply with a Prince Georges County Circuit Court order, GHI is forced to disband its Sales Department in early June. Major staff changes occur also as General Manager Kenneth Kopstein resigns and is replaced by Timothy Mitter.

### Metrorail

Beginning in January, city council and citizens urge the county council, through letters and petitions, to adopt the original planned alignment for the Metrorail E-line to Greenbelt. Fear is expressed that changes proposed now by other communities would result in delay and higher costs, thus jeopardizing the line. In mid-March, the issue comes before a divided county council. After heated work session, the county council votes in Greenbelt's favor, adopting the original alignment.

See TEN TOP STORIES, page 2, column 1



## OFFICIAL NOTICE

THE CITY COUNCIL EXPECTS TO MAKE APPOINTMENTS TO THE NEWLY ESTABLISHED GREENBELT CITIZENS CRIME PREVENTION COMMITTEE

IN JANUARY AND IS SEEKING INDICATIONS OF INTEREST FROM GREENBELT CITIZENS WHO WISH TO SERVE ON THIS COMMITTEE.

INFORMATION MAY BE OBTAINED FROM THE CITY OFFICES, 25 CRESCENT ROAD, TELEPHONE 474-8000 or 474-3870.

GUDRUN H. MILLS, CITY CLERK

### GHI BOARD MEETING

PRELIMINARY AGENDA THURSDAY JANUARY 14, 1982 8:00 p.m.

1. Approval of Agenda
2. Approval of Membership Applications
3. Visitors & Members
4. Manager Resale Financing
5. Committees Report of Member & Community Relations Committee
6. President
7. Board Members

### Greenbelt News Review

AN INDEPENDENT NEWSPAPER  
ALFRED M. SKOLNIK, PRESIDENT, 1959-1977  
Editor: Mary Lou Williamson, 441-2662  
News Editor: Elaine Skolnik, 447-6060  
Copy Editors: Barbara Likowski, 447-8483  
Virginia Beauchamp

**STAFF**  
Hally Ahearn, Sandra Barnes, Mira Batra, Suzanne Batra, Jim Boyle, Lee Chambers, Corinne Comulada, Mavis Fletcher, Joan Freeman, Jenny Geiger, Judy Goldstein, Marion Harrison, Rosemary Herrity, Peggy Hool, Janet James, Bernice Kastner, Sid Kastner, Martha Kaufman, Katherine Keene, Linda Kizale, Dorothy Lauber, Loretta Levesque, Leta Mach, Elizabeth Maffay, Ray McCawley, Robert Mongeili, Diane Oberg, James O'Sullivan, Ruth Powell, Bill Rowland, Lois Schrom, Charles F. Schwan, Jr., Pearl Siegel, James Simon, Sandy Smith, Joanne Tucker, Jean Turkiewicz, Ottilie Van Allen, Helen Webb, June Webb, Esther Yalowitz.  
**Business Manager:** Mike Jones; **Circulation Manager:** Carol Mongelli, 474-3954; **Springhill Lake Circulation:** Barbara Clawson, 474-4541; **News Review:** 474-4131; **Staff Photographer:** J. Henson.  
**Published every Thursday by Greenbelt Cooperative Publishing Association, Inc.**

**BOARD OF DIRECTORS**  
Pres., Elaine Skolnik; Vice Pres., Sid Kastner; Sec., Barbara Likowski; Treas., Virginia Beauchamp; Bill Rowland.  
**MAIL SUBSCRIPTIONS:** \$20 per year. Advertising and news articles may be mailed (Box 68, Greenbelt); deposited in our box at the Twin Pines Office before 4:30 p.m. Tuesday; or delivered to the editorial office in the basement of 15 Parkway. (474-4131). The office is open Monday after 8 pm for display advertising; deadline is 10 pm. News articles and classified ads are accepted after 8 pm on Tuesday; deadline is 10 pm.

Volume 45, Number 8 Thursday, January 7, 1982

### TEN TOP STORIES, continued from page 1

#### Pedestrian Overpass

Resolution of an impasse between the City of Greenbelt and Greenbriar Phase I residents over the location of a pedestrian bridge linking the central city with Eleanor Roosevelt High School comes in April. A district court jury awards \$29,000 to the Phase I council of owners in the city's condemnation suit for .09 acre of land. Although a few individual owners appeal that decision, title to the land is transferred to the city in May. By December, engineering plans are under review with construction to begin in the spring. Completion is expected by fall 1982.

#### School Closing and Census

North End School is on a list of 31 elementary schools designated for closing by the Prince Georges Board of Education. The closing is not opposed by the Greenbelt School Study Committee, which asks, however, for safety provisions for walking students. As school opens in August, Greenbelt students in the former North End district trek to Center School. At the same time, Greenbelt Junior High becomes a middle school for seventh and eighth graders. The city accepts a joint advisory board report which recommends acquiring the North End school property for community use.

The school closing reflects Greenbelt's population drop of nearly 900 in the last decade, as well as a rising median age. The official census for 1980 is certified at 17,332. The figure is important since revenue sharing and redistricting are tied to it.

#### Crime and Police

Although 1981 features a "hold-the-line" budget for the city, citizen and police concern over significant increases in crime persuade city council to authorize hiring two additional police officers. The council also establishes a citizen committee to study crime prevention programs that may be effective within the community.

Two city police officers find themselves prominently, albeit unwillingly, in the news in 1981. One officer is abducted and locked in the trunk of his police car when he thwarts an apparent attempt by three suspects to rob a restaurant. A second officer becomes the subject of a formal complaint to the city after he follows a speeding motorcyclist in a chase that ends in a collision, and then allegedly assaults injured cyclist.

#### Cable Television

Storer Communications of Maryland wins the city franchise to install cable television in Greenbelt. The system is expected to be operational before the end of 1982.

#### Changes in City Officials

The fall brings significant changes in the listing of key city officials with Charles Schwan, councilman since 1971, not running for reelection in September. Voters keep the other four incumbents in office for unprecedented fifth consecutive term together. Filling the empty seat is Edward Putens, the first Greenbelt East resident to join council, and the first since 1971 from outside the city's central area. Richard Castaldi becomes Greenbelt's first native-son mayor.

September also sees Dennis Piendak, assistant city manager and city treasurer, leave after nine years to become the first city administrator of Cumberland, Md.

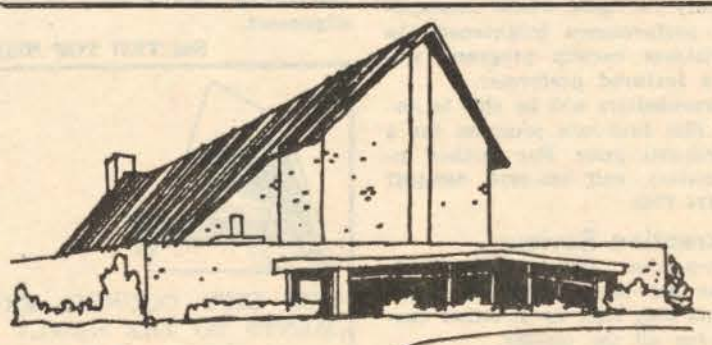
#### NYMAN REALTY, INC.

"Rick" Barber, GRI, CRS

- ★ Certified Residential Specialist (CRS)
- ★ Graduate Realtors Institute (GRI)
- ★ Member, Prince Georges County Board of Realtors
- 1981 Realtor Associate of the Year
- 1979 Community Involvement Award
- 1981-1983 Bd. of Directors
- Distinguished Sales Club
- ★ 1980 - Nyman Realty's top office associate - company top ten sales leader's club.

Available for inspection:  
3 BR, 2½ bath, family room and rec room split level over at Adelphi Mill. 5% down, low FNMA loan!

441-1010 474-5700  
Ask for "Rick"



### Holy Cross Lutheran Church

6905 Greenbelt Road

Worship Services: 8:30 and 11:15 a.m.

Sunday School: 9:50 a.m.

Sunday morning nursery at both services

Edward H. Birner, Pastor

Phone 345-5111

### Financial Advice at NOW

The Northern Prince Georges chapter of National Organization for Women will hold its general membership meeting on Wednesday, January 13, at the Greenbelt Library beginning at 7 p.m. Ms. Ann Smith, addressing the topic of Financial Planning, will be the featured speaker. The program will deal with IRA, budgeting, tax shelters, and money market funds. For further information, call 552-2928.

### Bake Sale at Utopia

A bake sale benefitting the Cultural Arts Center will be held outside the Utopia Theatre on Saturday, January 9 from 10 a.m. to 1 p.m.

### WINTER FUN RUN

The first Fun Run of the New Year will take place this Saturday, Jan. 9, at 9 a.m. at Greenbelt Lake. The distances will be ½, 1, and 2 miles, with finishers receiving color-coded certificates. Meet behind the bandstand and come appropriately dressed. No entry fees required. For further information, call Larry Noel, 474-9362.

### Woman's Club Notes

by Madeline Green

It was decided to hold the January meeting in the afternoon instead of at night. The meeting will be on Monday, January 11 at the Greenbelt Library at 1 p.m. Refreshments will be served. It is hoped that a daytime meeting will attract new members. All members are urged to remember the date and come.

### Paint Branch

#### Unitarian Church

3215 Powder Mill Rd.  
(near Cherry Hill Road)

9:30 a.m. Forum: Resistance in the USSR - Yuriy Olkhovskij  
11:00 a.m. Service: The Folly of Seeking Perfection - Richard Kelley, minister  
(also - celebration of Martin Luther King's birthday)  
937-3666

### ST JOHN'S CHURCH

#### Episcopal

Baltimore Blvd. at Powder Mill Rd., Beltsville

8:30 a.m. Holy Eucharist  
10:30 a.m. Holy Eucharist  
First and third Sundays  
10:30 a.m. Morning Prayer  
Second and fourth Sundays  
10:30 a.m. Sunday School  
Rev. John G. Bals, Rector  
422-8057

## Bahá'í Faith

Greenbelt Community  
P.O. Box 245  
Greenbelt, Md. 20770  
474-4090/345-2918

### Mowatt Memorial

United Methodist Church  
40 Ridge Rd. 474-9410  
Church School 9:30 - 10:30 a.m.  
(Ages Nursery - Adult)  
Morning Worship 11:00 A.M.  
Rev. Ira C. Keperling, Pastor  
474-1924

## J. Henson Photographics

— WEDDINGS —

— PORTRAITS —

— PORTFOLIOS —

ADVERTISING &  
COMMERCIAL  
PHOTOGRAPHY

J. Henson, Photographer

441-9231

## Greenbelt Community Church



(United Church of Christ)  
Hillside and Crescent Roads  
Phone 474-6171 mornings

11 a.m. - Sunday Morning Worship and Church School

Nursery provided at  
2B Hillside  
Rev. Sherry Taylor and  
Rev. Harry Taylor co-pastors

SPRING  
SUMMER

Whatever the season  
Whatever the temperature

FALL  
WINTER

You are invited to worship with us

## GREENBELT BAPTIST CHURCH

474-4212

Crescent & Greenhill Rds.

Bible Study for all ages (Sun.)

9:45 a.m.

Worship Service

11 a.m. & 7:00 p.m.

Midweek Prayer Service (Wed.)

8:00 p.m.

For bus transportation, call church office 8:30 a.m. to 12:30 p.m.

# Your Greenbelt Federal Credit Union

Organized to Serve You

Regular Savings Accounts

Share Certificates

Money Market Certificates

All-Savers Certificates

Checking (Share draft) Accounts

Electronic Funds Transfer:

Social Security Benefits

Civil Service Annuities

Military Pay

LOANS

for any worthwhile purpose

## Greenbelt Federal Credit Union

474-5900

121 CENTERWAY  
GREENBELT, MD. 20770

# CLASSIFIED:

\$2.00 minimum for ten words, 10c each additional word. No charge for listing items that are found. Submit ad with payment to the News Review office between 8 and 10 p.m. of the Tuesday preceding publication, or to the News Review drop box in the Twin Pines Savings & Loan Association office before 4:30 p.m. Tuesday, or mail to P.O. Box 68, Greenbelt, Maryland 20770.

BOXED: \$3.75/column inch. Minimum 1 1/2 inches (\$5.63.).

ELLERS TYPEWRITER REPAIR - Electric, Standard and portable. Call 474-0594.

UNIVERSAL CARPET CLEANING - Quality work at reasonable rates, steam cleaned. 474-8035. Free Estimates.

## GREENBELT APPLIANCE SERVICE

Washer Air Conditioner  
Dryer Refrigerator  
Dishwasher Disposal

All Makes & Models

10% OFF

For all Greenbelt Residents

624 Plateau Place 441-9137

TYPING - \$1.25 per page. \$1.50 for term paper, etc. Call 345-9162 9 a.m. to 9 p.m.

P/T and F/T positions available. Free training and good company benefits. Call Mr. Greg Shannon at 474-5700.

PAINTING - Interior, exterior, wallpapering, light carpentry, and ceramic tile. Good Greenbelt references, excellent workmanship. Frank Gomez. 474-3814.

## REMENICK'S IMPROVEMENTS

Painting Carpentry  
Stairways Decks  
Tile Additions  
Tub Kits Porches  
Floors Air Cond. Sleeves  
Sheds Fences

Paul Remenick 441-8699  
MHIC NO. 12842

GUITAR LESSONS - all styles, beginning to very advanced taught by top area guitarists. Studio in White Oak. 593-3822.

CALDWELL'S APPLIANCE SERVICE - all makes repaired. Call after 5 p.m. 593-9323.

PIANO TUNING AND REPAIR - Expert and Reliable Piano Service to Greenbelt since 1960. Benjamin Berkofsky. 474-6894.

PIANO LESSONS: Peabody Conservatory Graduate. Beginners - Advanced. 953-7094



## OPEN MEETING

January 13

7:30 p.m.

Greenbelt Library

All interested individuals are invited to meet with the Labor Day Festival Committee. This is the time to express your concerns and make suggestions about the Festival.

A MARRIED COUPLE with 2 children would like to rent a 3 bedroom masonry or brick home in old Greenbelt for at least a year beginning around March 1. Local references available. Call collect after 6 p.m. 607-273-7609.

KENT'S CARPET CARE - Low prices on shampoo, steam, and dual process. Call for free estimate. 474-3529.

P/T CLERK TYPIST-GOOD OFFICE PROCEDURES AND TYPING, CALL FOR INTERVIEW 474-7595.

LICENSED • BONDED • INSURED

## DAVID JAMES BUILDERS

Quality Home Improvements

Residential - Commercial

Interiors • Decks • Additions  
Garages • Porch Enclosures  
• Entranceways

474-6037 MHIC #12806  
FREE ESTIMATES

BED-Twin, solid maple with Beautyrest innerspring mattress and box spring. \$125 or make offer. 345-6963.

SITTER NEEDED for two children: 2 year old girl and 2 month old boy. Fulltime Monday-Friday, 7 a.m. - 5:30 p.m. starting Jan. 18th. Phone: 345-8068.

T.L.C. IN MY HOME for 2 yr. old. 474-4225.

## Beltway Appliance Service

SAME DAY SERVICE

on

• Washers • Refrigerators  
• Dryers • Freezers  
• Ranges • Dishwashers

Discounts to Senior Citizens

Phone 345-5511

ALL WORK GUARANTEED

BABYSITTER WANTED - someone to watch 16 and 30 month old boys. Flexible hours M-F. Call 474-6614.

HOUSEKEEPING - Experienced, reliable couple will do housecleaning. Good Greenbelt and Greenbriar references. Call 345-5063.

LADIES SCHWINN LeTour 10 speed bicycle with accessories. \$190 or make offer. Excellent condition. Call 345-4465 weekday evenings, anytime weekends.

SEAMSTRESS - Children's clothes. You provide pattern, material, notions. Mary: 345-5191.

HECHINGER INSULATED STORM/SCREEN DOOR (fits GHI homes). Good condition; two years old. \$30/best offer. 474-1982.

SEWING MACHINE CABINET - Singer desk with three drawers. 474-2416.



For Insurance Call:

Don W. Taulelle  
9200 Edmonston Rd.  
Greenbelt, Md. 20770  
474-5007

Like a good neighbor,  
State Farm is there.

State Farm Insurance Co's.  
Home Offices: Bloomington, Ill.

## RON BORGWARDT

10212 Baltimore Blvd.  
College Park, Md. 20740  
(on U.S. 1 at the Beltway)  
474-8400

"See me for car, home,  
life, health and business  
insurance"



State Farm Insurance Companies  
Home Offices: Bloomington, Illinois

INCOME TAX - PREPARED IN YOUR HOME. Reasonable rates, call James Cantwell, CPA. 474-2784.

WHAT DOES 1982 HOLD IN STORE FOR YOU? Consult your astrological chart for a sneak preview. 345-7923.

## R and D Construction

"Every Phase of Remodeling" One Call for All Your Needs - from Floors to Ceiling and everything in between.

Call for No-Obligation estimates - Local References.

ED DABOLT BOB RYAN  
937-2162

\* January Special  
STORM DOORS  
MHIC 5516

PORCH SALE - Baby items and clothes 0-9 mo. some adult size 10. Fri.-Sun. 10:30 a.m. - 7 p.m. 6 Lakeview Circle. 345-8826.

MOVING SALE - car, Honda Civic - 1974, Hatchback, auto transmission, AM radio, new starter & battery, \$1750; Sofa & chair (one year old), \$250; baby crib with mattress (Sears), \$50; 3 pc. coffee table set, \$30, 12' x 15' carpet with pad, \$60. 474-2540.

TAX BOOKKEEPING & accounting services at reasonable rates. Gerald Neumaier, CPA, 474-0919, 577-9040.

## Bingo

7:30 p.m.

every Thursday

at

St. Hugh's

135 Crescent Road

## PERSONNEL SERVICES

SF-171's RESUMES  
Our company includes a staff of experienced Federal personnel specialists knowledgeable in the mechanics of the total Federal personnel system. We provide the following services:

- SF-171 Preparation
- initial OPM ratings
- merit promotion vacancies
- upward mobility
- supplemental forms
- cover letters
- Grievances
- Appeals
- classification
- adverse actions
- Resumes
- highlighting your accomplishments and job experience

FOR INFORMATION CALL:  
345-0324 or 474-4418 (after 6pm)

PUTENS ASSOCIATES, INC.

## OFFICE ASST.

Thurs., Fri., Sat. Must be available other days when needed. Charlestowne North Apts. Greenbelt, Md.

Call 474-1633

## Kindergarten Extended Day Care

for Center School children. Your child will enjoy creative activities and warm companionship in a relaxed home atmosphere. Licensed, reliable, reasonably priced.

K. McEntee 345-7923

## SPECIAL

\$5.00 off on all  
Repair Jobs

With This Ad

CALL 441-9116

## Edgewood TV & Audio

Dependable Guaranteed Service  
4932 EDGEWOOD RD.

COLLEGE PARK, MD. 20740

We repair ATARI games

Licensed & Bonded

## The Cooking School

Seabrook, MD

459-5999

January Class Bulletins are now being mailed upon request. Evening classes at reasonable rates. Call for your FREE class bulletin.

LICENSED • BONDED • INSURED  
Reasonable Rates Free Estimates All Work Guaranteed

Carpentry  
Additions  
Porches  
Sundecks  
Painting  
Storm Doors  
Windows  
Ceramic Tile

## HOME AND YARD IMPROVEMENT SERVICES

M.H.I.C. #13141

Bob Wilhide 345-8368

NO JOB TOO SMALL

Plants & Shrubs  
Tree Service  
Lawn Care  
Roto Tilling  
Concrete  
Storage Sheds  
Fencing  
Gutters

## LEGAL CLINIC of DOUGLAS I. MALCOM

|                  |          |
|------------------|----------|
| Divorce, Uncont. | 200.00   |
| Incorporation    | 200.00   |
| Simple Will      | 35.00    |
| Bankruptcy       | 225.00   |
| Adoption         | 200.00   |
| Guardianship     | 100.00   |
| Auto Accident    | 25%      |
| Hourly Rate      | \$ 35.00 |

(Fees Exclude Costs)

## FREE INITIAL CONSULTATION

Beltway Plaza

Shopping Center

Greenbelt, Md. 20770

474-8808

Call for appointment

## Nyman Realty, Inc.

NEW LISTING

GHI Brick - 3 BR, 1 1/2 bath, handicapped accessible.

Close to center school, library, and shopping. See it now!

Call

Paul Parsons

474-6830

474-5700



THE NEIGHBORHOOD COLOR TV



REPAIRMAN HAS A NEW PHONE NUMBER!

565-0001

I provide in-home service in this neighborhood 4 days each week as well as some evenings and weekends. I'm bonded, licensed and top rated for over 20 years. You can count on my estimates and prompt fair service. I always call before visiting, carry more than 5 times the normal inventory of parts, and can (almost) always repair your Color TV IN YOUR HOME, ON ONE TRIP. I repair Black & White sets, HI FI's and VCR's also.

Thanks for reading my AD. Please save it.

F. JOHNSON OF IN-HOME TV SERVICE

- I KEEP MY PROMISES -



# Greenbelt Pizza-Sub Shop

DOORBUSTERS EVERY DAY

Friday and Saturday

Extra Cheese Pizza Day

Quarter Pound Hamburger .....85c

All Week

7up, Dr. Pepper, or Coca Cola ..... \$1.88 a carton

107 Centerway

474-4998



REAL ESTATE, INC.

6000 GREENBELT ROAD  
BELTWAY PLAZA

GREENBELT, MARYLAND 20770

ROPER REAL ESTATE opens it's new office at Beltway Plaza in Greenbelt - 20 Agents carefully selected, properly trained and very successful. Stop by and visit our new office. Meet our Staff and you will be impressed!

LAUREL ..... 3 Bedroom, 2 Bath Townhome. \$44,000  
GREENBELT ..... 2 Bedroom, Garden Home, enclosed sun den \$44,990.

COLLEGE PARK ..... Yarrow! - 4 Bedroom, 3 Bath, fireplace, 2 car garage. All brick split level.

474-2132

A Complete  
Package of

# SAVINGS & SERVICES

designed for you  
by a staff of courteous  
and friendly professionals  
who are responsive to  
your needs at

# Twin Pines

Your Savings and Loan Association  
owned and operated by and for its members

Greenbelt Shopping Center  
Greenbelt, MD 20770  
301-474-6900

## NEW HOURS

effective Monday, January 18  
Monday-Friday ..... 9-3  
Friday evening ..... 5-8  
Saturday ..... 9-12

MSSIC-insured savings  
to \$100,000 per account



## 1982 WINTER LEISURE TIME ACTIVITIES GREENBELT RECREATION DEPARTMENT

474-6878



In-person registration, first-come, first serve basis. ALL REGISTRANTS MAY SIGN UP AT EITHER CENTER FOR ALL CLASSES.

Monday, January 11, 10am-4pm and 7-8 pm, Greenbelt Youth Center

Tuesday, January 12, 10am-4pm Greenbelt Youth Center and 7-8pm Springhill Lake Recreation Center

Wednesday, January 13, 10am-4pm Greenbelt Youth Center

Late registration on a space available basis only, on Thursday, January 14 at the Youth Center Business Office. All late registrants will be charged a \$1.00 late fee. Make all checks payable to the CITY OF GREENBELT.

A 10% discount will be given to all senior citizens, 60 years old and over, registering for classes. Non-residents will be charged an additional 25% for all classes.

All classes begin the week of January 18, 1982. Should any class be cancelled due to snow, make-ups will be held at the end of the regular class schedule. Classes are held for the number of sessions or hours designated.

Refunds will be made if classes are cancelled by the Department due to insufficient registration. Other refunds will be made only according to provisions in City of Greenbelt Resolution No. 65, which also requires that refund requests be made in writing immediately for valid reasons.

LOCATION CODE: CS - Center Elementary School; SHLRC - Springhill Lake Recreation Center; YC - Youth Center.

BABYSITTING: Services provided for classes indicated by asterisks (\*\*). Fee is \$75c per-child per class hour. Participants must register for entire class and fee is required at time of registration.

### CHILDREN, TEEN & ADULT CLASSES

| ACTIVITIES  | LOCATION | DAY/TIME               | AGE GROUP  | FEE                       |
|---|----------|------------------------|------------|---------------------------|
| Non-Resident add 25%  |          |                        |            |                           |
| Arts & Crafts   | YC/SHLRC | Mon 3:45-4:45p         | K-3 Grades | FREE - 8 weeks            |
|   | YC/SHLRC | Wed 3:45-4:45p         | 4-6 Grades | FREE - 8 weeks            |
| Ballet - Adult  | YC       | Tue 6:30-7:30p         | 16 & over  | \$15/8 sessions           |
|   | YC       | Sat 10-11a             | 6 & over   | \$12/8 sessions           |
|   | YC       | Sat 9-10a              | 3-5 yrs.   | \$12/8 sessions           |
| Basketry - plus materials   | YC       | Wed 8-9p               | 16 & over  | \$12/8 sessions           |
| Chucks 'n' Lassies  | SHLRC    | Sat 9-10a              | 6-10 yrs.  | FREE - 8 weeks            |
|   | YC       | Sat 12n-1p             | 6-10 yrs.  | FREE - 8 weeks            |
| Clay Modeling   | YC       | Sat 9:30-10:30a        | 6-12 yrs   | \$8/8 sessions            |
| Clowning Class  | YC       | Wed 6:30-8p            | 9-15 yrs.  | \$12/8 sessions           |
|   | YC       | Sat 10-11:30a          | 9-15 yrs.  | \$12/8 sessions           |
|   |          | CS                     | SHLRC      |                           |
| CPR - Cardiopulmonary Resuscitation   |          | Feb 9 & 10             | 17 & 18    | 7-10:30p                  |
| PRE-REGISTER CALL M-F, 9-5,   |          | Mar 9 & 10             | 17 & 18    | 7-10:30p                  |
| 474-6878 \$2.00 book fee for all  |          | Apr 13 & 14            | 21 & 22    | 7-10:30p                  |
|   |          |                        |            | FREE; \$5/Non-Res         |
|   |          |                        |            | FREE; \$5/Non-Res         |
|   |          |                        |            | FREE; \$5/Non-Res         |
| Creative Carousel   | YC       | Sat 10:30-11:30a       | 4-5 yrs.   | \$5/8 sessions            |
| Floor Acrobatics/Tumbling   | YC       | Mon 4:00-5:00p         | 6 & over   | \$8/8 sessions            |
| Gymnastics  | YC       | Thu 3:45-4:45p         | 9-12 yrs.  | \$12/8 sessions           |
|   | YC       | Tue 3:45-4:45p         | 6-8 yrs.   | \$12/8 sessions           |
| Pre-School  | YC       | Thu 2:30-3:30p         | 3-5 yrs.   | \$12/8 sessions           |
| Jazz/Tap Dance  | YC       | Sat 11a-12n            | 9 & over   | \$12/8 sessions           |
| Jazzercise  | YC       | **Thu 10-11a           | Adult      | \$12/8 sessions           |
| Kid's Kitchen   | YC       | Tue 3:45-4:45p         | 3-8 yrs.   | \$8/6 sessions            |
|   | YC       | Thu 3:45-4:45p         | 7-10 yrs.  | \$8/6 sessions            |
| Managing Your Stress  | YC       | Wed 7:30-9p            | 18 & over  | \$10/4 sessions           |
| Organ - Course is held at Jordan-Kitts on Rt. 1 in College Park. Free practice time available. Classes begin Saturday, January 30, 1982 | Beg      | Mon 5-6p               | Children   | \$28/8 sessions           |
|   | Beg      | Thu 7-8p               | Children   | \$28/8 sessions           |
|   | Beg      | Mon 11a-12n            | Adult      | \$28/8 sessions           |
|   | Beg      | Tue 11a-12n            | Adult      | \$28/8 sessions           |
|   | Beg      | Tue 5-6p               | Adult      | \$28/8 sessions           |
| Piano - Course is held at Jordan-Kitts on Rt. 1 in College Park. Free practice time available. Classes Begin Saturday, January 30, 1982 | Beg      | Mon 7-8p               | Children   | \$28/8 sessions           |
|   | Beg      | Fri 6-7p               | Children   | \$28/8 sessions           |
|   | Beg      | Sat 10-11a             | Children   | \$28/8 sessions           |
|   | Beg      | Thu 11a-12n            | Adult      | \$28/8 sessions           |
|   | Beg      | Thu 7-8p               | Adult      | \$28/8 sessions           |
|   | Int      | Wed 7-8p               | Adult      | \$28/8 sessions           |
| Pottery - By Hand and Wheel - plus materials, Unlimited Practice Time   | Beg/Int  | YC **Mon 10:00a-12:00n | Adults     | \$32/10 sessions          |
|   | Beg/Int  | YC Mon 7:30-9:30p      | 16 & over  | \$32/10 sessions          |
|   | Beg/Int  | YC Tue 7:30-9:30p      | 16 & over  | \$32/10 sessions          |
| Pre-School Playtime   | YC/SHLRC | Thu 3:30-4:30p         | 3-6 yrs.   | FREE - 8 weeks            |
| Roller Skating  | CS       | Wed 4:00-6:00p         | K-3 Grades | 50c w/own skates          |
|   | CS       | Fri 4:00-6:00p         | 4-6 Grades | 75c skate rental          |
|   | CS       | Sun 1-3p               | ALL AGES   |                           |
| Slimnastics   | YC       | Thu 7-8p               | 16 & over  | \$12.50/10 sessions       |
|   | YC       | Tue 7:30-8:30p         | 16 & over  | \$12.50/10 sessions       |
| Trampoline  | YC       | Wed 3:45-4:45p         | 6 & over   | \$10/8 sessions           |
|   | SHLRC    | Sat 11a-12n            | 6 & over   | \$10/8 sessions           |
| Tumbling  | SHLRC    | Sat 11a-12n            | 6 & over   | \$8/8 sessions            |
| Volleyball - Competitive  | CS       | Mon 8:30-10:30p        | 16 & over  | FREE - January thru March |