

# Greenbelt News Review

AN INDEPENDENT NEWSPAPER

Volume 39, Number 11

GREENBELT, MARYLAND

Thursday, January 29, 1976

## GHI AD HOC PANEL FINDS NO BASIS TO HUTZLER CHARGES

by Sid Kastner

All nine directors were on hand for Thursday's GHI board meeting, but manager Roy Breashears could not be present due to illness so comptroller Donald McGinn sat in for him. Much of the meeting — too much, in some people's opinion — was taken up with shed policy, but the ad hoc committee appointed earlier to investigate a number of charges by dissenting member Martha Hutzler, chaired by Benjamin Rozensweig, presented its final report to the board also.

Board members displayed a wide divergence of views on how to disseminate the Rosenzweig committee's report, which stated that it found no documentation to support the charges. (The text of the committee's summary letter along with Mrs. Hutzler's reply is printed elsewhere in the News Review.

Director Norman Weyel suggested including it with the packet for the spring annual meeting; director Mary Clarke urged mailing it to all members now. Director Stephen Polaschik suggested putting a note about the report's conclusions in the News Review but Director Hugh O'Donnell felt it was an internal affair of the corporation and argued against publicizing it before the members were informed, as did Director Virginia Moryadas.

Directors Donald Volk and Weyel, however, felt it was already a public matter since it was on the agenda of the meeting. They and chairman Jim Smith spoke for releasing a copy of the report to this reporter, who notes that was probably a reasonable course of action since this particular ad hoc committee was presumably created as an entity independent of board control.

### Sheds

An "interim report" on storage sheds, prepared by member Al Sarni in collaboration with the manager, stimulated more argument than it settled. The report consisted of an overall plan for one court alone, describing free-standing shed configurations that would be allowed. Though the board was obviously appreciative of the work that went into it, O'Donnell considered it "too vague"; Weyel noted that the owners of one bedroom apartments were not included in the plan; and Volk speaking for the Aesthetics and Environment committee, said that screening of sheds — not proposed in the Sarni-Breashears report — was a useful treatment to incorporate.

Polaschik further complained that free-standing sheds "spoil the feeling of openness" in the GHI area. In this, he was replying to a statement from the floor by Mrs. Hogensen who was urging that members should be allowed some freedom in erecting free-standing sheds. However O'Donnell agreed with another view expressed by Mrs. Hogensen, namely that sheds take up too much of the board's time; he proposed a motion to refer the development of a master plan for sheds, that would take account of "site suitability," to a future agenda; amendments by Moryadas and Weyel made the conditions more specific and upon passage of the motion Smith set up a special meeting on shed policy which will be held on March 4, and which will be preceded by informational reports by the Engineering and Maintenance committee and the Aesthetics and Environment committee. Members interested in any aspects of the shed situation are urged to participate in the March 4 meeting.

### Other Matters

In other matters taken up after

the lengthy discussion of sheds, the time and place of the annual meeting were considered in a preliminary way. Board members seemed to agree with Mary Clarke that the use of a voting machine was essential, and with Jim Smith that Center School hall is the only feasible location. On a motion by O'Donnell, the date of May 13, or alternative dates from June 1 - 4 will be explored by staff members with a view to having simultaneous use of hall and voting machine.

Also, O'Donnell informed the board about an information-gathering session which has recently been held in Greenbelt by Senator Conroy and Delegates Ross and Devlin, which he attended. He reported that he spoke to them, as a private individual about the corporation's need for tax relief and about the need for legislation dealing with financing for cooperatively-owned homes. Board members listened with interest, though Smith stressed the difficulty of deciding exactly what kind of legislation GHI should push for. However, questions on this will be put to counsel Albert Ginsberg and the manager.

## Greenbelt Could Benefit From Grant-In-Aid Bill

Under a bill co-sponsored by 24th Legislative District delegates Gerard Devlin, Leo Green, and David Gray Ross and 13 other delegates, Greenbelt along with 26 other Prince Georges municipalities could benefit from a comprehensive program of grants-in-aid. The sum allotted to Greenbelt alone could amount to \$68,200.

The bill is designed to stabilize real estate taxes and to equalize taxes paid by those who live in incorporated areas who also pay county taxes and those who live in unincorporated areas.

"Marylanders who live in cities and towns take a portion of the tax burden off other taxpayers by providing services which the county would otherwise have to provide," Devlin said. "Clearly this results in an inequitable situation."

## Discussion Groups Offered by CARES

Greenbelt CARES Youth Services Bureau is now offering the second in a series of discussion groups, centering on issues of family life. There will be five sessions, beginning in early Feb. with meetings held on Thurs. from 1-2:30 pm. Carol Leyenthal, Director of Client Services and Eddie Haaz graduate student at American University, will again co-lead the group. For additional information call 345-3456.

### WHAT GOES ON

Fri., Jan. 30, 10 a.m., Center School Assembly on Flags  
Mon., Feb. 2, 8 p.m., City Council Meeting & Public Hearing on Greenbelt Trail, Municipal Building

## AGENDA

### REGULAR MEETING OF CITY COUNCIL

Mon., February 2, 1976

8:00 P.M.

#### I. ORGANIZATION

1. Call to Order
2. Roll Call
3. Meditation  
Pledge of Allegiance to the Flag
4. Minutes of Regular Meeting of January 19, 1976
5. Additions to Agenda by Councilmen and Manager
6. PUBLIC HEARING
  - a. Charter Amendment Resolution of the City of Greenbelt, Maryland, Enlarging the Corporate Boundaries of the City of Greenbelt by Annexing Land Contiguous and Adjoining the Existing Corporate Area - Second Reading
  - b. Proposal to Establish a Bicentennial Trail

#### II. COMMUNICATIONS

7. Petitions and Requests
8. Administrative Reports
9. Committee Reports

#### III. OLD BUSINESS

10. An Ordinance to appropriate \$1,850 from the Replacement Fund out of Existing Replacement Reserves to Provide for the Purchase of Swimming Pool Filter Elements and Covers - Second Reading
11. A Resolution to Transfer Funds Within Departments - \$4,300 - Second Reading
12. Preliminary Plan of Subdivision - Glen Ora Gardens Advisory Planning Board Report #172.
13. Preliminary Plan of Subdivision - Greenbelt Triangle Advisory Planning Board Report #173
14. Jaycee Club House Lease

#### IV. NEW BUSINESS

15. Appointments to Board of Elections
16. METRO Curtailment
17. Meetings

#### V. MISCELLANEOUS

### Decision on High School

This evening, Jan. 29, the Prince Georges Board of Education is expected to make a decision on the Eleanor Roosevelt Senior High School and the Bowie Middle School. Meeting in Upper Marlboro, the board will probably take up the school matter some time after their public participation session which starts at 7:30 p.m.

### AN INTERPRETIVE REPORT

## Reporter Finds E. Roosevelt School Hearing Incredulous

by Sandra Barnes

If you were a Greenbelter sitting in the audience of close to 700 people last week during the Board of Education hearing at DuVal High School, you would come away with a sense of incredulity it seems to me. The majority of the audience came from Bowie as did nearly half the speakers, 16 out of 36. And what all of these good people were arguing over was the busing issue. Most of us fought that battle three years ago. But not Bowie. It seems that from kindergarten through grade 12, the majority of Bowie students stay in Bowie. Their elementary school children attend the neighborhood's under-capacity schools and their high school children attend their badly overcrowded high schools. And that's just the way Bowie citizens like it.

### Bowie Arguments

It was amazing to hear speaker after speaker get up and tell how his or her child would suffer if he were bused out of his neighborhood school, how even "the quality of life" in Bowie would suffer. Kids would lose their strong ties with their community. Students would bid farewell forever to their good friends as some would go to Largo and others to DuVal. Bowie kids' SAT (Scholastic Aptitude Test) scores would decline because Bowie ranks above the national average while, they say, DuVal has very low scores. No one wanted his Bowie child to travel long distances on "unsafe" school buses.

Well, we in Greenbelt as well as every other community in Prince Georges County heard those arguments echoed and re-echoed three years ago. We in Greenbelt, as well as in most other communities in Prince Georges County, didn't want to see our children, especially our little kindergartners bused to Landover. We fought the battle; our children were bused to John Carroll and Oakerest, to Mary Bethune Junior High and Parkdale. Virtually no family was not or will not be touched by the busing issue. But after the dust cleared, and the children settled down, most everyone — students and parents — seemed satisfied that the best education possible was being had under the circumstances.

### New Carrollton Views

One of the ironies to come out of the meeting last week was the stand taken by about half a dozen New Carrollton parents and a contingent of New Carrollton students who are currently being bused to Largo Senior High.

These parents did not want to see their children being bused to a closer school, Parkdale, as one of the plans proposes. New Carrollton Mayor Harding and Councilman Bill Delbrugge clearly expressed their feelings that the kids who were bused from Parkdale 3 years ago, should not have to go through the upheaval again even to return to the closer school. A cheering section of kids, waving Largo pennants, reiterated what the adults had said. "We belong in the Largo Lions den," they proclaimed. There weren't many objections to incoming tenth graders attending Parkdale.

The sentiment from Bowie was clearly, "Let Bowie kids stay in Bowie." As Audrey Scott, Bowie city councilwoman said, "Don't move anyone . . . I don't like any of the proposals . . . Let Greenbelt kids go to the school by themselves and close up the part of the building not being used . . . And change the name from Eleanor Roosevelt to Greenbelt High School . . ." Another person accused the superintendent, Carl Hasel, of using the overcrowding issue at Bowie Sr. High as an "excuse" for busing. Others attacked the location of the new school, located within five miles of two other high schools, as poor planning.

Only one person out of the many who spoke against the prevailing Bowie sentiment, Elizabeth Leverance, a resident of College Park, stated that resistance to busing should not delay the opening of the new school. And, since the Bowie students were not bused three years ago, they should not think that they were forever exempt.

### Greenbelt Speaks Out

For the most part Greenbelt stood alone in calling for a comprehensive school opening in September without the heinous open enrollment plan being proposed by board members Nicholas Eny and James Golato. In reasoned, and

sometimes impassioned tones, Greenbelt citizens marched to the microphone to espouse their cause. None touched on the Bowie issue, feeling that the student enrollment at Roosevelt need not encompass Bowie at all. And yet, here was the opening of a new high school, designed in part to alleviate overcrowding in all area schools. It is difficult to see how boundary changes could not affect Bowie. Bowie may be peripheral to Greenbelt's main concerns, but in the overall picture it is a factor.

Greenbelter Marcia Krasnick stated that "There is no need for an open enrollment policy for the new school. It is unfair to Roosevelt and to every other senior high school from which students might come. Establish boundaries to relieve the population congestion . . . educators should speak frankly and tell the board and the public what is financially realistic and educationally best and feasible for the students . . ." Mrs. Krasnick and others felt that the boundary lines could be drawn so that Bowie students would not have to be shifted. School Board members made no comments during the entire hearing.

### Against Open Enrollment

Delegate Leo Green, from Bowie, urged the board to open the school on time, with fixed school boundaries and with the capacity to take advantage of the close proximity of NASA.

Among Greenbelters reiterating their hope for a comprehensive school without the open enrollment concept were the Greenbelt City Council, Greenbelt Homes, Inc., Nancy Spong, Katherine Keene, Tillie Wetter, Kathy Gough, Audrey Stern, Charles Brown, Joan Conway, Si Pristoop, and Diane Kritt (excepts from their statements appear elsewhere).

The main points against the open enrollment concept were best expressed by Muriel Weidenfeld representing the Greenbelt Citizens Committee. "No one will know until the last minute how many students will choose to attend or which schools they will come from. An open enrollment policy could encourage blocks of students to shift to Roosevelt from other high schools resulting in the tipping of racial balances in those schools and possibly necessitating further last-minute shifting of students throughout the county. Such a situation could be chaotic and raises the danger of the school board finding itself back in the courts.

"If open enrollment does not produce the students needed to fill the comprehensive high school, then those attending run the danger of being deprived of the type of quality education that a full-scale curriculum can provide.

"An open enrollment policy means additional transportation costs, a complicated network of bus routes and the need for more buses to serve Roosevelt."

### Technical Center

Opposition to the technical part of the Roosevelt high school was also expressed by Greenbelters. Audrey Stern spoke of the additional tax dollars if Roosevelt were converted into a technical school after the school has already been constructed to the tune of \$11 million. Diane Kritt expressed concern that the student population might be insufficient to offer a full-scale comprehensive program. Others decried the insufficient time available to plan and test a technical curriculum and to making building alterations.

It remains to be seen what the school board will decide at its meeting tonight in Upper Marlboro, when it discusses the issue.

**GREENBELT NEWS REVIEW**

AN INDEPENDENT NEWSPAPER  
Editor: Mary Lou Williamson, 474-4906  
Associate Editor: Sandra Barnes 474-5310

**STAFF**

Alexander Barnes, Virginia Beauchamp, Ann Bolt, Mary Clarke, Jane Connolly, Miriam Cornelius, Theresa Crowley, Judy Goldstein, Bernice Kastner, Sid Kastner, Martha Kaufman, Barbara Lane, Sue Lange, Dorothy Lauber, Jean Levesque, Loretta Levesque, Lawrence Levine, Barbara Likowski, Paula Mask, Bob McGee, Roberta McNamara, Wini Milan, Olga Penney, Al Skolnik, Elaine Skolnik, Ottilie Van Allen.  
**Business Manager:** Adele Mund; **Springhill Lake Circulation:** Barbara Clawson, 474-4541, **Circulation Manager:** Lynette Johnson, 345-1916.  
Published every Thursday by Greenbelt Cooperative Publishing Assn., Inc.  
**BOARD OF DIRECTORS**  
Pres., Al Skolnik; Vice Pres., Sid Kastner; Secy., Barbara Likowski; Treas., Roberta McNamara, Paula Mask.  
**MAIL SUBSCRIPTIONS:** \$10.00 per year. Advertising and news articles may be mailed (Box 68, Greenbelt); deposited in our box at the Twin Pines Office; or delivered to the editorial office in the basement of 15 Parkway (474-4131), open after 8 p.m. Tuesday. Deadline is 10 p.m. on Tuesday.

Volume 39, Number 11

Thursday, January 29, 1976

**Pet Pollution**

**To the Editor:**  
Last week I notified the city council that the presence of dog feces in the vicinity of my home was becoming a public nuisance affecting the health of my toddler who recently stumbled into a pile and the cleanliness of my shag rug onto which he tracked it. I requested that council recognize the problem and take action with it.  
Council acknowledged the seriousness of the problem and noted that there were ordinances requiring owners to clean up after their pets. Council also observed that these ordinances are unenforceable. The police will not ordinarily take action unless a specific complaint is filed. People are reluctant, however to file complaints against their neighbors for relatively minor offenses.

Looked at as a whole it is not a minor problem. Communities the size of Greenbelt typically have more than four thousand dogs excreting more than a half ton of feces and nearly seven hundred gallons of urine each day on the streets and public areas. While being esthetically undesirable, it is also a health hazard to mix human beings with dogs and their excrement. More than forty diseases in the United States can be transmitted from dogs to humans. The better known are ringworm, roundworms, hookworms, tapeworms, fleas and rabies.

I consider this to be the most serious pollution problem facing our city. At least Greenbriar's effluent lies in the next watershed, not on our very doorsteps.

The problem of dogs in urban environments is of national interest. The city council should find out who the experts in this field are and take step to cope with the problem. Residents of Greenbelt should express their concern directly to the city council or via the News Review.

(Information for this letter was drawn from an editorial that appeared in Science, 13 September 1974, Volume 185 Number 4155.)

William A. Clarke

**GHI Quiz**

**To the Editor:**  
Mrs. Eunice Coxon's letter of Jan. 15 prompted me to prepare a quiz that I hope your readers will take.

1. Who, on December 28, 1972, submitted a petition calling for a GHI special membership meeting which did not specify the action proposed to be taken?

2. Who refused to spell out the action proposed even after being advised that the bylaws required that the notice of meeting so specify?

3. Who, after all such advice, tried to affect a motion at the special membership meeting of January 31, 1973?

4. Who sued the board of directors on April 30, 1973 because membership voting was not permitted - and lost the suit?

5. Who was present at the membership meeting of March 11, 1975, when proposed bylaw changes were discussed, including the one to require a petition to state a motion?

6. Who, along with other members, received a notice for the May 1975 GHI annual meeting setting forth all proposed bylaw changes?

7. Who, among others, attended the May 1975 meeting at which the bylaws were amended?

8. Who now complains that "most of us" were not aware that the bylaws require that a petition state a specific motion?

If gentle reader, you answered "Mrs. Eunice Coxon" to all questions, you made a perfect score.  
Charles Schwann

**Know Your Robert's Rules**

**To the Editor:**

In his letter printed in the News Review of January 15, Mr. George Taube asked, "When the chair was challenged and a discussion sought by the members from the parliamentarian, what happened? Is it not in Robert's Rules of Order that when challenged the parliamentarian give a ruling?"

Robert's Rules of Order (Revised) provides that the parliamentarian advise the chair. No member may make inquiry of him. Only the chair makes rulings. (See Robert's Rules, p. 397-398).

With regard to the other points about which Mr. Taube is critical of the chair's rulings, any member could have made a point of order that the chair was in error. The chair would then have ruled on the member's point of order. (See Robert's Rules, p. 212-218). Assuming that the chair ruled that the point of order was without merit, the member could then appeal the ruling of the chair. A majority vote of those present would overrule the chair. (See Robert's Rules, p. 218-222).

Because many GHI members are not familiar with parliamentary procedures and because the bylaws require that the chair and the membership alike be governed in the conduct of their meetings by Robert's Rules, the Fall 1975 issue of the GHI Newsletter contained brief descriptions of the most commonly used parliamentary terms and actions. Members of GHI are urged to read this material so that they may know what their rights are, how they may protect them, what they may or may not do, etc.

Rules of order are intended to facilitate the conduct of business in a fair, orderly and expeditious manner so that the will of the majority may be accomplished while the rights of the minority are protected. In the chair, I have tried to conduct GHI meetings to implement both the spirit and the letter of the rules of order we must follow.

James W. Smith, President GHI

**Schedule Posted**

**To the Editor:**  
GHI board and committee meetings are ordinarily open to all members and members are invited to attend meetings and familiarize themselves with the opportunities and challenges facing our cooperative. The schedule for all committee meetings is now being posted at the cashier's window on Hamilton Place and in the GHI announcement window outside of Twin Pines. This schedule is tentative and further information including agenda can be obtained from the committee chairmen.

Mary Clarke  
Chairman.  
Member Relations Committee

**Open Letter to the People of Greenbelt**

I have a mom and dad, and mother-in-law living in Greenbelt. This would be my home also, but the size of my family rules it out.

Just in passing I would like to comment on some of the improvements going on. The new city map on Southway, with its stone-wall presents a pleasing entrance to Greenbelt. The sandblasting of the paint off the bricks on the Center shops and surrounding homes look nice. The natural bricks add a touch of warmth to an already warm community. It will also save on yearly upkeep for paint.

The new "solar collectors" on Southway also show that Greenbelters are way ahead of others, and know how to use resources wisely.

I understand that your new high school will be named after the grand lady who had a hand in making Greenbelt the marvelous place it is today.

I don't know who is responsible for all the ideas, and workmanship; but whoever is, keep up the good work. Thank you for making Greenbelt such a nice place to live.

William I. Kelly  
College Park, Md.

**Mathews - Kinzie**

Mr. and Mrs. Arthur R. Mathews of Greenbelt announce the recent marriage of their daughter, Jill Marie, to Michael Lee Kinzie, son of Mr. and Mrs. Charles Kinzie, Greenbelt. The ceremony was performed at Berwyn Presbyterian Church, followed by a reception in the church hall. The bride was given in marriage by her father. She was attended by four young women and her niece was train bearer.


Mr. Kinzie will graduate from the University of Maryland in June. His wife plans to enter the university in September.

**Mishkan Torah News**

A family style Shabbat dinner with Rabbi Kenneth Berger will be held at the Mishkan Torah Congregation, Ridge and Westway roads, Feb. 20 at 6:45 p.m. For reservations call Alice Pearlman 345-1715 after 5 p.m. by Feb. 9.

A family service will be held on Friday, Jan. 30 at 8 p.m.

**Holy Cross Lutheran Church**



6905 Greenbelt Rd.  
Worship Services  
8:30 and 11:15 A.M.  
Sunday School 9:50 A.M.  
Weekday Nursery School  
9:00 - 11:30 A.M.  
Phone 345-5111  
Edward H. Birner, Pastor

**Youth Group Cabaret**

A "cabaret night" will be held at Greenbelt Community Church on Sat., Jan. 31, beginning at 8 p.m. The entertainment, arranged by the Senior High Youth Group to raise money for the furnace fund, will include a musical program and other attractions. Refreshments will be on sale. For information phone Lora Leo, 474-5825.

**GREENBELT COMMUNITY CHURCH**

(United Church of Christ)  
Hillside and Crescent Roads - Phone 474-6171 (mornings)  
Sun., - 11 a.m. Worship Service and Church School  
Infant Care at 2-B Hillside  
Wed., Jan. 28, 10 a.m. Bible Study - Gospel of Mark.  
Sat., Jan. 31, 8 p.m. "Cabaret Night"  
Admission, \$1.50  
Rev. Sherry Taylor and Rev. Harry Taylor Ministers

**Bahá'í Faith**

"This handful of dust, the earth is one home. Let it be in unity."

345-2918


or  
474-4090

**Bahá'u'lláh**

P. O. Box 245  
Greenbelt, Md. 20770

**UNITED METHODIST CHURCH**

(Mowatt Memorial) 40 Ridge Rd., Greenbelt, Md. 474-9410  
Church School 9:30 A.M. (For ALL Ages)  
Morning Worship - 11:00 A.M.  
Sermon: "Son of Man and Son of God"  
Nursery Care for Infants through Kindergarten  
Rev. Clifton D. Cunningham (474-3381 474-9410)

The  is God's plus sign. It says,

God plus your life can make a difference.

Let Him put the plus in your life!

**GREENBELT BAPTIST CHURCH**

474-4212  
Bible Study for all ages (Sun) 9:45 am  
Sunday Worship 11:00 am & 7:00 pm  
Mid-week Service (Wed) 7:30 pm  
For bus transportation, call church office 8:30-12:30 weekdays

Morning Classes begin Feb. 12 or 14  
at Greenbriar Clubhouse  
**BEHAVIOR MODIFICATION FOR WEIGHT CONTROL**  
Carol Hunerlach, M.S., R.D., Consulting Nutritionist  
345-4433

**Greenbelt Carry-out**

PROTECT YOUR TABLE WITH A GOLDEN JOE LABEL

First Sunday of the Month Sale - Feb. 1st

Your choice of Subs - Royal Steak, Meatball, Royal Meatball, Tuna, Turkey & Cold Cut .....75c

Other Specials  
Chili dog .....55c  
Chili Burger .....55c  
Chili Pizza - available

Hot Chocolate .....25c

Special Bonus - A Golden Joe famous All Weather Hat Free with every pizza order.

Carton 6 pk. Sodas start at 99c

107 CENTERWAY 474-4998

**NOTICE OF PUBLIC HEARING**

The City Council has scheduled a Public Hearing to receive citizens' comments on a proposal to establish a

**BICENTENNIAL TRAIL**

in the city. The hearing will be held on

Monday, February 2, 1976 at 8:00 P.M.

in the Council Room, Municipal Building, 25 Crescent Road. Copies of the proposal, giving details of the trail and descriptive markers, may be obtained at the City Offices prior to the hearing and will be available to the public at the hearing.

Gudrun H. Mills

City Clerk

# Statements on Roosevelt School

The main issue before the Prince Georges County Board of Education is the Eny-Golato proposal for the opening of Eleanor Roosevelt senior high school as a combined comprehensive (regular)/technical school with open enrollment except for primarily Greenbelt area students. Excerpted below is the position of the Bowie city council in favor of this proposal, followed by excerpts from statements made by Greenbelt organizations and citizens opposed, all delivered at the January 22 public hearing.

### Bowie City Council

"On November 13, 1975 and on December 18, 1975, the citizens of Bowie and the city council made it abundantly clear that the community is overwhelmingly opposed to the "Wendorf Proposal". We have expressed our desire to you for a high school boundary plan which will prevent overcrowding in Bowie Senior High School, as well as prevent the closing of underutilized Bowie elementary schools (using the middle school concept) and one which enables Bowie students to retain their sense of community. Such a plan has been proposed by board member A. James Golato . . . (It) would keep Bowie High School students in Bowie and preclude the great expense of busing to DuVal High School from the Rockledge, Whitehall and Huntington districts of Bowie, and to Largo High School from the Kenilworth and Heather Hills Districts . . .

"We also endorse the Eny concept of a combination, comprehensive high school, and advanced technical center at Eleanor Roosevelt High School with open enrollment . . . and guaranteed attendance by Greenbelt students . . ."

### Marcia Krasnick -

" . . . There seems to be a view that Bowie students can only be kept in schools in their community by opening Roosevelt to students on a voluntary basis. But, information available to the Board and public at least two months ago shows enrollment at most schools exceeds 90% of pupil capacity — the Board's own stated goal of desired school size. It appears from this information that boundary lines could be drawn to assign to Roosevelt the current excess enrollment at these schools, with the exclusion of Bowie, to come up with the desired number of students to support a full comprehensive curriculum at the new school . . ."

### Nancy Spang -

"Should the Board of Education decide on an open enrollment policy for Eleanor Roosevelt Senior High School, the name of the game will be Russian roulette.

"Eight months ago, this board adopted a resolution which provided that no new school will open below 10% or above 50% black, and that the opening of any new school will not be permitted to tip other schools beyond these percentages.

"Now it is proposed that, except for a small group including Greenbelt area students, all students attending the Roosevelt combination comprehensive-technical center would be admitted on a first-come, first-served basis.

"No one can say how many students would voluntarily attend either half of Roosevelt. No one can say from what other senior high schools or what junior high schools these students would come. Depending on their number and on skin color, area senior high schools and junior highs could be tipped in their racial mix. In some cases, the numbers required to upset balances are quite small. One would be hard pressed to design a pupil enrollment policy more certain to produce chaos and uncertainty."

### Katherine Keene

" . . . I have one suggestion that might make it possible to give Bowie this special consideration (for a middle school): since the plans range from a yearly \$84,000 to some \$333,000 would the Bowie citizens perhaps agree to a special annual levy for Bowie alone to pay? It seems to me unfair that class size throughout the county might have to be increased to pay for any of these programs, or that the rest of the county be billed in any way . . ."

### Tillie Wetter

"I strongly question the viability of any untried program of open enrollment. There are so many factors to be taken into consideration.

"Cost would be the number-one impediment to open enrollment. The computer company has difficulty setting up bus routes for schools with set boundaries. I would fear their computer would blow a fuse in planning routes for this. They would also up their already exorbitant fees. The cost of bus transportation throughout the county is mind boggling.

"Cost in administrative hours would also be prohibitive. Thousands of prospective students would need to be surveyed. Tons of new paperwork would be added to our already mired network of red tape."

### Audrey Stern

" . . . the board is aware there are tight days ahead and that there will be cuts in programs to make ends meet. The board is even thinking of increasing class size. How then can the board now justify spending additional sums of money for conversion of part of the Eleanor Roosevelt Senior High School to a Technical Center? How can the board consider additional transportation costs for an open enrollment policy for most of the new school?"

### Kathrine Gough

"Even if the expensive, impractical Eny resolution is voted through, we will probably end up with the comprehensive school with fixed boundaries, so why not face reality and give all families affected in the county a chance to prepare for a smooth opening in September."

### Muriel Weidenfeld, Greenbelt Citizens Committee on Eleanor Roosevelt High School.

" . . . The fact is that practically every senior high school in this part of the county is overcrowded and a new high school, no matter where located, is needed to relieve this overcrowding. The school board itself has set down as its goal, enrollment not to exceed 90% of capacity, and the opening of the new school in September as scheduled is needed to achieve this goal.

"The big problem is that since last October over a dozen plans have been drawn up affecting the Roosevelt school. Most are based on last-minute, hastily drawn, conflicting board proposals, alternate proposals and amendments—the full consequences of which have not really been weighed . . .

"We must also express our opposition to the latest plan for the technical portion of the Roosevelt School. As attractive as this plan might be when fully developed, its introduction at this state can only lead to confusion and delays. As the staff points out in its report, the new optional programs scheduled for inclusion in the curriculum have not yet been designed and there is no time for involving industry and business in program development, no time for the usual piloting of new programs which would provide solid information which is now lacking, no time for recruiting and training of specialized staff."

### Charles Brown

" . . . just picture the uncertainty and confusion that open enrollment will produce for the staff. No one will know until the last minute how many students will voluntarily enroll, and where they will come from. Just imagine the difficulties of trying to plan programs, recruit staff, and arrange transportation for a student body whose shape and composition can fluctuate over a very short period of time. And I haven't even mentioned the impact on the students who wouldn't know until the last minute what their status is, whether courses they desire

will be available, whether transportation will be provided, etc."

### Greenbelt City Council

" . . . To establish school enrollment on a first come, first served basis makes no sense to us — whether it be for the whole school or only a portion of its student body. Who would choose to enroll in the comprehensive curriculum half of the school? What would be its attraction? Why should students now attending another senior high school want to go to Eleanor Roosevelt? Would a disproportionate number of enrollees be maladjusted, failing in their work, malcontents, students who would be merely running from their problems? Would the population be of a sufficient size to warrant a full general curriculum? Would a sufficient number of students choose to enroll in the completely untested technology part of the new school?"

" . . . In asking that the entire school have a general curriculum we do not disparage career technology education. On the contrary, it is exciting to contemplate the idea that some years hence we may have a school — or combination of schools including DuVal and possibly Parkdale, too, — that might be comparable to the Bronx School of Science and Mathematics or Baltimore Polytechnical. These schools did not come to their present positions of eminence overnight, however. They took years to build. Eleanor Roosevelt, alone or in combination, will not achieve such a position by fiat. There is a way to reach it, however. That would involve enrichment of the general curricula of one, two or three schools with the appropriate courses. Combine this with the Board's own enlightened student transfer policy, and we may be optimistic about our reaching the academic excellence level of Baltimore Poly and the Bronx School."

### Joan Conway

"Although we welcome innovation, we must always discern what is feasible, and we must reject what is impractical. In reality, I believe that Eleanor Roosevelt High School would be inoperable as a magnet school next September, for it has no established reputation . . . It is wasteful of human resources to unnecessarily explore this matter further since there are so many other areas of vital concern within our school system."

### Diane Kritt

" . . . We want a full-scale comprehensive program. We want a large enough assured student population to offer classes in each subject area for the gifted, for the regular college-bound, for the students going on to trade or vocational schools, and for those going directly into the world of work or homemaking."

Si Pristoop urged the board to open the comprehensive portion of the school in September.

### Greenbelt Homes, Inc.

" . . . Eleanor Roosevelt Senior High School was not built within the past two or three months. It has been under construction all during the time that this elected Board of Education has been in office. Suddenly, with the school's scheduled opening a scant eight months off, the Board is considering a radical change in curriculum and the admission of all save Greenbelt area students on a "voluntary" basis. Given the lead time for planning that the Board had we wonder why these matters could not have been considered, discussed and decided on a more timely basis. To our knowledge, nothing has happened in the last six months or year — and the school originally was to have opened in September 1975 — to justify the Board's contemplating now any radical departures from previous policies . . ."

## Recreation Review

### Teen Topics

The next ski trip is planned for the evening of Fri. Feb. 6, to Ski Liberty, Fairfield, Pennsylvania. Those teens who attended the last trip will be given priority registration. For info on all teen activities, contact Mike Lundregan, at the Youth Center 474-6878.

### Family Roller Skating

Roller skating for the entire family is held every Sunday, 1-3 p.m. at the Center School. Come skate with your children, it's fun. Bring your own rink skates or rent ours. A nominal fee is charged at the door.

### Open Gyms

Following is a schedule of other open gyms in the area:

Greenbelt Junior High School — Sundays, 2-6 p.m.

Parkdale Senior High School — Sundays, 1-6 p.m.

### Girls/Women's Gym

Girls of any age are welcome to participate in Women's Night activities, from 7-11 p.m. at the Youth Center and Springhill Lake Center gyms on Wednesdays. Volleyball and basketball are offered.

## "Impromptu" Evening Planned for Feb. 7 & 8

The Grenoble Theatre Guild will present an evening of one-act plays on Feb. 7 and 8, at 8:30 p.m. Featured on these evenings will be "Impromptu", by Tad Mosel; scenes from "Anne of a Thousand Days" by Maxwell Anderson; scenes from "The Fourposter," by Jan de Hartog; and a presentation in mime.

There will be no admission charge for the plays which are to be presented at Grenoble Hall, St. Hugh's Church, 135 Crescent Rd., Greenbelt. For more information call 561-5780, or 474-9378.

## Stamps, Coins, Antiques At Beltway Plaza Mall

Coins stamps and antiques will be displayed at the Beltway Plaza flea market beginning Sat., Jan. 31 and continuing every Saturday and Sunday thereafter. Walter Wilbert a philatelic and numismatic authority, will conduct the show.

## Baltimore Symphony Concert Tomorrow

Violinist Kishiko Suzumi will appear as guest soloist with the Baltimore Symphony Orchestra in a second Prince Georges County concert at Prince Georges Community College in Largo, tomorrow (Friday, Jan. 30) beginning at 8:15 p.m. The program will include, in addition to violin works by Chausson and Ravel, Brahms' "Variation on a theme of Haydn" and Rimsky-Korsakoff's "Scheherazade."

Tickets for the concert are available at the door, and are half-price for senior citizens and students. For further information on this or the next concert in the series, telephone Symphony Society member Josie Blair, 474-7711.

## Center School Holds Assembly On Flags

### by Anita Mead and Scott Douglass

On Friday Jan. 30, at 10 a.m. the Greenbelt Center School will hold an assembly about flags. The American Legion Auxiliary will be there to present a set of flags to hang in the school.

Students have class projects and they will show them in the assembly. They will present flags and recite poems and sing songs. There is also another flag that will be presented, it is the Bicentennial flag. The flag which students helped to buy. It will be there that day.

We will be happy to have you.

## Assistance For Elderly Renters Outlined

Elderly and totally disabled renters are eligible for assistance from the City of Greenbelt. The program offers grants to Greenbelt renters amounting to 3% of the rent paid during the preceding year for an apartment in the city.

To be eligible a renter must have attained the age of 65 or be totally and permanently disabled if under 65. Also the combined gross income of the applicant and all other persons within the household shall not exceed \$5,000 for the preceding calendar year. As indicated, a renter must have paid rent for an apartment within the city and the applicant must reside within the city at the time of making application.

Applications may be filed until February 15, 1976 for assistance for the grant year 1975. Applications are available from the City Treasurer's Office, 25 Crescent Road and it is not necessary to apply in person. Residents wishing to call the Treasurer's Office at 474-8000 may do so and request that an application be mailed to them.

Residents are also reminded that Prince George's County offers a similar program of assistance to elderly renters. Information concerning the County program may be obtained by calling 952-1052.

The accompanying chart gives a thumbnail description of the various aid programs at the city, council and state levels.

COMPARISON OF ELDERLY ASSISTANCE PROGRAMS (January 1 1976)

Requirement	Disability (City)	Refuse Tax Credit (City)	Renters Grant (City)1/	Renters Grant (County)1/	Disability (County)	Circuit Breaker (State)
Minimum Age	Under 60	60 or disabled	65 or disabled	65 or disabled	Under 60	60
Income	\$7,500	\$5,000	\$5,000	\$7,500	\$7,500	Varies—maximum net worth \$150,000
Gross Income Inclusions	Everything (Circuit Breaker Definition)	Everything (Circuit Breaker Definition)	Everything	See Below2/	See Below2/	Everything
Assistance Formula	Tax Rate X \$7,000	50% Credit of Fee	3% of Rent to Maximum for Tax Credit	15% of Rent	Tax Rate X \$6,000	3/Difference between tax liability and income 1/
Maximum this fiscal year	\$70.00	\$30.00	\$70.00	\$200.00	\$202.20	3/ \$750.00

1/City and County programs are not mutually exclusive. A renter could qualify for both.

2/In determining gross income the County allows for excluding from Social Security or Railroad Retirement benefits or the first \$3,200 of benefits received from another government pension program.

3/First year applications are computed on \$6,000 of assessed valuation while any subsequent increase in assessed valuation are added to the basic computation.

4/Tax liability established as 3% of first \$3,000 income (\$90), 4% of next \$5,000 (\$200), 5% of next \$4,000 (\$200) 7% of next \$3,000 (\$210) and 9% of income over \$15,000. Thus, at \$15,000 income maximum tax liability is \$700 with anything additional paid by the program to a maximum of \$750.00.

# Ad Hoc Investigatory Panel Makes Report

Presented below is the text of the summary findings and recommendations of the Ad Hoc Investigatory Panel appointed by Greenbelt Homes, Inc. to review the charges brought against the management and board by Martha Hutzler. Mrs. Hutzler's reply to the report is also printed.

December 15, 1975  
Board of Directors  
Greenbelt Homes, Inc.  
Hamilton Place  
Greenbelt, Maryland 20770  
Gentlemen:

As requested in your letter of March 12, 1975 from President Smith, this Panel has meticulously studied the charges brought by Mrs. Martha Hutzler in her December 3, 1974 letter to counsel.

Our study of Mrs. Hutzler's supporting documentation as well as other source documents requested by the Panel from banks, auditors and management consultants has failed to sustain any of the charges made. Copies of our own supporting data are attached as enclosures.

Our effort to meet with Mrs. Hutzler for a detailed interview was refused as copy of her reply shows.

Our findings are keyed to the charges in Mrs. Hutzler's letter on the following pages. Our recommendations are forwarded herewith.

### RECOMMENDATIONS

1. That the costs of responding to members on many occasions are an expense which the membership should not be required to bear. We therefore suggest the Board consider a policy that all future responses to inquiries which require extensive effort be made only after a cost estimate has been made and accepted by inquiring members and agreed to be prepaid.

We find that the Auditors in making their 1975 examination, were burdened with time-consuming demands by members, for which GHI was billed \$1,000 for Auditor's time, without prior Board authorization having been requested by these members.

2. That all Government Agencies to whom representations by Mrs. Hutzler or other dissatisfied members have been made, be strongly urged to respond or declare the matter either moot or closed, so that this can be made a matter of record.

3. That the Board consider giving complaining members the option of selling their Mutual Ownership Contracts to GHI, when unsubstantiated charges repeatedly made demonstrate lack of good faith on their part.

4. That advice of counsel be sought for legal recourse by GHI when constant harassment by members appears to be based on malice,

slander, or libel.

We record here with deepest regrets the sudden passing of our highly regarded panel member, Mrs. Edna Farmer, whose vigorous participation made a most important contribution to our efforts.

**Adhoc Investigating Panel**  
B. Rosenzweig Chairman  
J. Wright, Vice Chairman  
M. Harrison, Secretary  
T. Pritzker, O. Van Allen,  
W. Williams, A. Gropp,  
W. Hoff, L. MacDiarmid  
J. Loftus, I. Menassa  
T. Lammons, W. Mayhew

August 26 1975

Mr. Ben Rosenzweig  
Chairman of the Ad Hoc Committee  
Dear Sir:

Having read the report, plus the appendix, by your committee it confirms again the old adage "None are so blind as those who won't see."

You have arrogantly assumed the role of both judge and jury. The statement that you found the charges "NOT SO", can hardly be called in depth. It is self serving.

A contradiction by you of the charges is not a confirmation of your being right.

I want to impress upon you the fact that I am the plaintiff NOT the defendant.

Mr. Ginsberg (who did not acknowledge my letter) received only a token sample for emphasis. The statements by board, management, Oehmann & Co., the U. S. Income Tax Returns and the Suburban Trust notes and payments on same have been turned over to the Attorney General's office.

All information will be forthcoming at the proper time and place and it won't be dictated by any committee sponsored by Mr. Smith, our chairman.

A concerned member,  
Martha Hutzler

### NEED HOME REPAIRS?

Call the Handyman  
anytime  
552-1059

Special Discount for Senior  
Citizens on 1 coat painting

# New Developments City Council Topic

Two Advisory Planning Board reports dealing with new development in the city will be considered at the next meeting of city council on Mon., Feb. 2. Report #172 deals with the Glen Ora townhouse project and the other — Report #175 — with the commercial development of the Golden Triangle.

### Glen Ora

The APB expressed general pleasure that the Glen Ora project will consist of owner-occupied townhouses rather than garden rental apartment type construction which is permitted under the R-30 zoning now applicable to the 80-acre tract located south of Greenbelt Road opposite Greenbriar and the new senior high school. Developer Alan Kay has submitted a preliminary subdivision plan for the eastern half of the tract which consists of 12.16 acres.

The APB said, however, that the contemplated private recreation facilities do not appear to be adequate to meet the overall needs of Glen Ora when fully developed. For example, it noted that no athletic ballfields were contemplated. Furthermore, "previous experience has shown the need for providing for recreation facilities through a gymnasium which includes an indoor basketball court."

The APB therefore recommended that there should be a mandatory dedication of land by the developer which is tied to the entire tract and not to each individual subdivision. It noted that a fee in lieu of dedication would come to only an estimated \$31,000 which would not be sufficient to provide these facilities.

The APB also had reservations about the proposed highway plans for the project, which it felt could present problems of ingress and egress. Mandan Road as the principal entrance and exit could result in traffic tie-ups similar to those experienced in Springhill Lake, in the APB's view.

### Golden Triangle

The APB report dealt with a preliminary plan for the Golden Triangle which was approved in August 1974 by the Prince Georges County Planning Board. The plan has now been resubmitted since the original approval had expired. In approving this subdivision plan, the County Planning Board had imposed several conditions which included:

a) Approval of a site plan for the entire parcel, including site analysis in regard to natural development constraints, general location of proposed land uses and intensities of development, parking and access, landscaping proposals, and storm water management.

b) Provision of satisfactory assurance of the limitation of office building development to 450,000 square feet until it is demonstrated that increased capacity of access roads would permit the establishment of a new ceiling.

The County Planning Board also urged the developer, Milton E. Selig, to take into consideration the strategic location of this parcel with respect to major transportation routes and the effects on aesthetics of signs, lighting, etc.

The APB in its report recommended that these conditions be included once again in the resubmitted plan. In addition, it recommended that 1) access to the 2 acres of city-owned land at the northern end of the Golden Triangle be provided; 2) every effort be made to minimize the number of curb cuts along Greenbelt Road and that access to lots within the tract be by an internal circulation system; 3) extra right-of-way dedication be provided along Greenbelt Road to provide for a slow lane similar to that in front of the Beltway Plaza.

### Greenbelt Soccer

The Greenbelt Soccer Association plans to form a boys 12 and under team for the spring season. Boys new to the game of soccer will be taught soccer skills by the coaches of the 14 year old team assisted by some of the more experienced players. Call 345-3152.

### PORTER'S LIQUORS

8200 Balto. Blvd. 474-3273  
(next to McDonald's in College Park)

We have the largest selection of Wines from around the world. Special prices on case purchases

Order Early

Any questions about wines welcomed

### Stern's SHOE REPAIR

While U Wait  
DISCOUNT PRICES

Beltway Plaza

around the corner Hanover Shoes

Meltonian Creams & Sprays  
474-9288 M-F 10-9 Sat. 'til 6

## STUFF NEXT YEAR'S HOLIDAY STOCKING NOW!

## Twin Pines Savings & Loan Assn. 5.5% DAILY RATE ON HOLIDAY SAVINGS

- ☆ Open A Holiday Savings Account
- ☆ Deposit On A Regular Basis
- ☆ Relax and Enjoy next Season's Holidays

HOURS  
MON thru THURS. 9 to 6  
FRIDAY 9 to 8  
SATURDAY 9 to 12



Maryland Savings-Share Insurance Corporation  
Insures each account to \$40,000.00

NOTARY SERVICE (free to account holders)  
MONEY ORDERS 20c up to \$250.00  
XEROX COPIES 10c

To: G.H.I. Members

### Report #14 on GNMA Deferral Monies to be Used for Heat Conservation Programs

Total Funds Available	\$318,764
Less: Authorized Payments to Date	176,492
Balance of Funds	142,272
Interest Earned on Funds	\$ 10,732
Less: Cost of Notices	213
Total as above	\$152,791

Location: Equitable Trust Company:

Certificates of Deposit	\$150,000
Savings	2,791
Total as above	\$152,791

Repayment Funds:

Collected thru December 1975	\$109,895
1976 Collection	8,318
Interest Earned on Funds	3,472
Total	\$121,685

Location: Peoples National Bank:

Certificates of Deposit	\$121,500
Savings	185
Total as above	\$121,685

January 27, 1976  
James R Foster  
Treasurer

## JOIN YOUR CREDIT UNION IT'S WHERE YOU BELONG

### AUTO FINANCING

\$ \$ \$  
**LOW CREDIT UNION RATES**

Amount of Loan	24 Months		36 Months	
	Monthly Payment	Total Interest	Monthly Payment	Total Interest
\$1,500	\$68.94	\$154.56	\$48.12	\$232.32
\$2,000	91.92	206.08	64.16	309.76
\$2,500	114.90	257.60	80.20	387.20
\$3,000	137.88	309.12	96.24	464.64

Monthly payments include principal and interest (.8 of 1% per month on the unpaid balance - 9.6% annual rate), plus life insurance for eligible borrowers at no additional cost.

### GREENBELT FEDERAL

## CREDIT UNION

121 Centerway (Shopping Center)  
Greenbelt, Md. 20770 Phone: 474-5900  
Hours: Daily: 9-3 Saturdays: 9-1  
Friday evening 7-9

COME IN AND GET YOUR FREE  
BICENTENNIAL APPOINTMENT CALENDAR

**DIAL TRUTH**

**EVERY DAY**

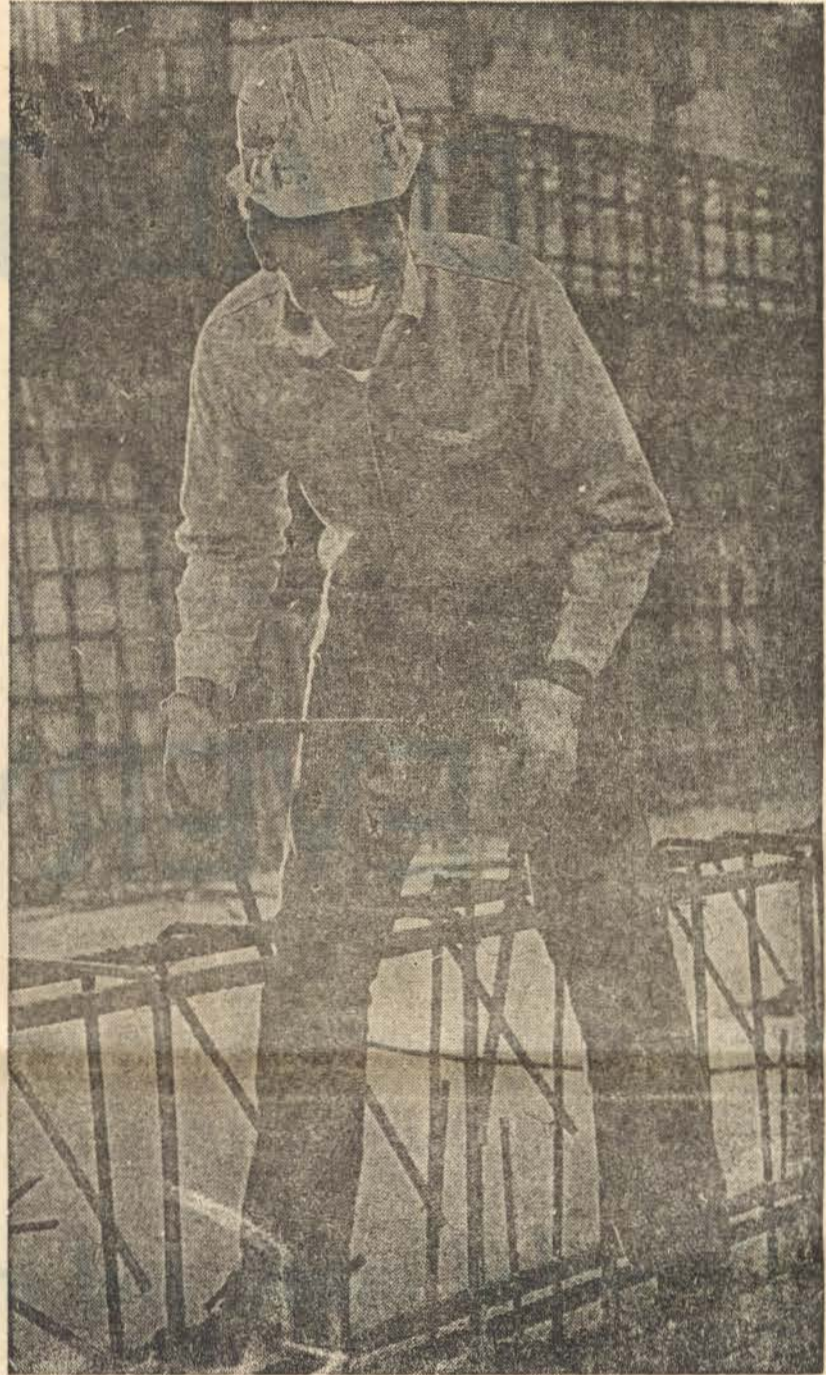
Recorded music and inspiration by telephone

**270-9000**

# Before Harry Crayton joined the Payroll Savings Plan.



# After Harry Crayton joined the Payroll Savings Plan.



Can you tell the difference?

There isn't any. And that's the point. Joining the Payroll Savings Plan is so easy and painless, you'll hardly notice you're saving.

All you do is sign up at work. Then an amount you specify is automatically set aside from your paycheck and used to buy U.S. Savings Bonds.

And while you're spending your take-home pay, you're still building a solid nest egg.

Maybe you won't look any different. Or feel any different.

But you'll be a lot richer.

How U.S. Bonds pay for interest when held to maturity of 8 years (4% the first year). Lost, stolen or destroyed. Bonds can be replaced if records are provided. When needed, Bonds can be cashed at your bank. Interest is not subject to state or local income taxes, and federal tax may be deferred until redemption.



## Take stock in America.

Join the Payroll Savings Plan.

### CLASSIFIED

\$1.50 for a 10-word minimum, 10c for each additional word. Submit ads in writing, accompanied by cash payment, either to the News Review office at 15 Parkway before 10 p.m. of the Tuesday preceding publication, or to the Twin Pines Savings and Loan office.

There is no charge for advertising items that are found.

**CALDWELL'S WASHER SERVICE.** All makes expertly repaired. Authorized Whirlpool dealer. GR 4-5315.

**PIANO TUNING AND REPAIR -** Expert and Reliable Piano Service to Greenbelt since 1960. Benjamin Berkofsky 474-6894.

**TYPEWRITER REPAIR, ELECTRIC, STANDARD AND PORTABLES.** Call 474-6018.

**ANTENNA PROBLEMS**  
Sales & Service  
Expert antenna man will install new/repair antenna for  
**Attic or Outdoors**  
**474-5530**

**TROMBONE TRUMPET and VOICE LESSONS.** Professional musician with degree. 474-5945.

Educational books and games for all ages. Leisure Learning Center, Beltway Plaza 474-1200.

**(MARIE'S POODLE GROOMING)** make your appointments today. Call 474-3219.

**PIANO LESSONS:** Peabody Conservatory Graduate. Beginners-Advanced. 474-9222.

**WEDDING PHOTOGRAPHY** at low rates; packages from \$45. Call 345-3381 for appt.

**HOUSE DOCTOR**  
Expert craftsman will replace broken window glass, misc. electrical jobs, wall patching, ceramic tile, etc. Assemble sheds and yard duties. Call anytime.  
**474-5530**

**CLARINET LESSONS:** 1st Clarinet, U. S. Army Field Band, BM degree Peabody Conservatory. Beginners - Advanced 474-9222.

**LIGHT HAULING,** w/ pick-up Truck. Call Mike after 4:30, 474-9401.

**EXPERIENCED SECRETARY** wishes to type in own home. Reasonable rates. Call 552-2877.

**LAMPS REPAIRED -** Floor and Table types Call 474-5530.

**INCOME TAX Returns Prepared.** J. Mousley, 474-6045.

**KARATE LESSONS:** Beginners and Advanced. Call 474-4418, for information.

**VACUUM CLEANER REPAIR -** All brands and types. Call 474-5530.

**INCOME TAX RETURNS** prepared by retired revenue agent. Reasonable rates. Phone 345-8634.

**WINTER CLEARANCE SALE** at University Boutique International. All winter merchandise is reduced up to 40%-incredible bargains-see today's display ad. Also discover new colors and styles in DAN-SKINS sportswear & a unique selection of American Indian Jewelry, University Boutique International, 7420 Balt. Blvd. College Park. Open 11 a.m. to 6 p.m.

**HOUSE FOR SALE -** 3 Bedroom frame townhouse, near North End school. Large, shaded back yard. Many improvements - paneling, refinished floors, floored attic. W/D, portable dishwasher, a/c. \$16,500. Call 345-7147.

**HELP WANTED:** Refuse Collector, \$3.55/hr. starting salary. Fringe benefits. Apply City of Greenbelt, 25 Crescent Road, 474-8000 The City is an equal opportunity employer.

**AVAILABLE FOR** odd jobs week-ends and after school. Call Ponnro 345-3583.

**WANTED -** ride to Silver Spring. Mon.-Fri. will pay. Hrs. 8:30-5:30. One way or both. Call 474-6630.

**WANTED:** Small maple student desk w/chair. Call 345-8410 aft. 6 p.m.

### Golddigger Registration

The award winning Golddigger twirlers are holding winter registration Feb. 3 and 10 at Greenbelt Center Elementary School at 7:30 p.m.

The twirlers have participated in the past four Maryland State and the past three Eastern Regional Championships; each time returning with many awards. They are currently active members of USTA and have won hundreds of trophies in the last 5 years. The Golddiggers participated with the Carroll-tones at the National competition held in Columbus, Ohio last August, and are prepar-

ing together for the National Championships to be held in Miami Beach, Florida this summer.

**State Farm Insurance**  
**Ron Borgwardt**  
474-8400  
Auto - Life - Homeowners  
10212 Baltimore Blvd.  
College Park, Md. 20740  
(on U.S. 1 at the Beltway)

**GREENBELT REALTY**  
151 Centerway  
Greenbelt, Maryland 20770  
474-5700

Greenbelt  
1 Bedroom Upstairs Apartment with Remodeled Kitchen, Washer included in this very low priced Apartment. \$9,950.

1 Bedroom End downstairs Apartment in wooded area with lovely backyard. Occupancy within 30 days.

2 Bedroom 1 1/2 bath End Frame Townhouse backed up to woods Interior freshly painted - Exterior to be painted as soon as weather permits. An excellent buy \$16,000.

2 Bedroom End Frame Townhouse with Addition in quiet Court. Priced right \$16,950.

3 Bedroom Frame Townhouse - Washer, Dryer, Portable dishwasher, Wall to Wall Carpeting all included in low price \$15,950.

3 Bedroom Masonry Townhouse close to Center. Washer, Dryer, Dishwasher, 2 Air Conditioners, Carpeting included in Price \$22,000.

3 Bedroom 1 1/2 Bath Masonry End Townhouse with Beautiful Addition, A Must to See!

**LOT - BROCK HALL ESTATES:**  
Need ACREAGE to build a lovely home? We have listed a very nice building lot that's over 2 Acres in a prestige area. Call for information.

**Charletowne Village: For Rent**  
3 Bedroom Brick 2 1/2 Bath Townhouse on Lakecrest Drive.

Come in to talk to one of our experienced sales people to list your home or to find the home of your choice in any area of Prince George's County, Montgomery County, Howard County, or any County in Maryland.

**WE SELL GREENBELT!!**  
**IF YOU ARE INTERESTED TO SELL, CALL US!!**  
**IN SHOPPING CENTER NEXT TO MOBIL GAS STATION**

**Beltway Plaza Mall**

**AT GREENBELT ROAD**  
At Beltway Exit 28 and Kenilworth Ave. Modern Climate Controlled Mall With 75 Great Stores

**GRAND OPENING**  
**Antique Show and Flea Market**  
Sat., Jan. 31 and EVERY Saturday & Sunday Thereafter

**Come one, Come All!**  
**Browse and Shop Indoors in our Heated Mall**  
Dealers Call 577-7058

**ROOM IN** apartment available for female. 345-7139.

**HELP! HELP!** volunteers needed for the business end of News Review. Try your hand at advertising or bookkeeping. Call 474-6060, 474-4906.

**2 GUINEA PIGS.** 50c each. 345-3470. (Lori)

**PAINTING -** exterior only, Greenbelt area. Call Dick Stewart 345-7682.

**SALE -** Vacuum cleaner - Eureka canister- like new \$30. Call 474-5530.

**WOULD LIKE TO BABYSIT** full-time. I'm reliable, mature mother, like children. Live at Springhill Lake, Greenbelt. Call 474-0913 any time.

**FOR SALE -** 74 VW Super Beetle. Auto trans, Excellent Cond. \$2950.00 Call 345-8012 after 6 p.m.

**FOR SALE -** Upright piano. Good playing condition. \$500. Sew Gem sewing machine \$20. Call 345-8012 after 6 p.m.

**Home Remodeling**  
Kitchens, Rec. Rms., Sun Decks, Additions, etc.  
**Call Don Soule'**  
**474-0881**  
Licensed, Have References.  
P.S. Come See My Addition at 4 Empire Pl. in Lakewood!

**GREENBELT TRANSMISSIONS**  
159 Centerway 474-1800  
ALL MAJOR MOTOR WORK  
HONEST, RELIABLE WORK  
ALL WORK FULLY GUARANTEED  
8-6 weekdays, 8-1 Sat. Open 'til 9 p.m. Thurs.

**WILL'S HARDWARE**  
All Lines of Hardware  
Windows & screens repaired Glass cut to size  
Pipe cut & threaded Electric & Plumbing Supplies  
Key & lock supplies Glidden paint, sakrete products  
Drapery hardware Rug shampooer rented  
10502 Baltimore Blvd., Beltsville 937-4141  
Open weekdays 8-6:30, Saturday 8-6, Sunday 10-1

**Federal & State Tax Returns**  
prepared in your home  
Call MR. GINSBERG  
924-2633

**MOVING?**  
Flat Rate or Hourly  
Experienced & Dependable  
**MARYLAND STATE MOVERS**  
532-2019  
FREE ESTIMATES

**Present This Coupon**  
**Seabrook Bakery & Deli**  
Come in and try our fresh, delicious pastries, pies and cookies. We'll give you a FREE cup of "hot" coffee to go with your purchase.  
**577-9854**  
9434 Lanham-Severn Rd. Seabrook Shopping Center  
offer good FEB. & MAR. 1976  
— Clip This Coupon —

**GUITAR & BANJO INSTRUCTION**  
Folk, Rock, Blues, Country  
All Styles Fingerpicking  
Blue Grass & Folk Styles on 5-String Banjo  
Free advice on purchase of new guitars & banjos.  
10-30% Discounts  
Rental Instruments with option to buy.  
Springhill Lake Community House  
Call Ed - (301) 730-2078

**FIRST FEDERAL SAVINGS & LOAN OF ANNAPOLIS**  
Certificates up to 7.75% yielding 8.17%  
All certificates \$1,000.00 minimum Federally Insured  
There is a substantial penalty on early withdrawal of all certificates.  
BELTWAY PLAZA SHOPPING CENTER  
GREENBELT, MARYLAND • 474-6004  
Main Office: 2024 West St. Annapolis, Md. 21401

**REAL ESTATE OFFICE of GREENBELT HOMES, INC.**  
Hamilton Place  
OPEN 7 DAYS A WEEK  
3 br. brick townhouse, attic, addition on first floor; nice condition throughout; walking distance to shopping center. March occ.  
2 br. frame home - nicely improved; ra/refg/washer/dryer; lovely location in 18 Ct. Ridge Road.  
3 br. frame home - first floor addition, nice equipment; well-cared for; owner can move anytime. Large gardenside yard faces wooded area.  
1 br. second floor apartment, corner location; living room; dinette; remodeled kitchen; bd room & bath; ideal for single person - selling at \$10,000.00.  
OTHER 1, 2 & 3 BEDROOM BRICK & FRAME PROPERTIES AVAILABLE.  
ARRANGE TO COME IN AND TALK TO OUR SALESPERSON FOR COMPLETE DETAILS IN BUYING IN G.H.I. - THE RIGHT MOVE TO MAKE!  
LOCATION... FOLLOW THE RED & WHITE SIGNS DIRECT TO HAMILTON PLACE.  
Mary E. Dixon - Broker  
474-4161 474-4244 474-4831

# The Greenbelt Trail

## --A Self-Guiding Tour

Nearly a year after it was presented to city council, one of the major projects of Greenbelt's Bicentennial Committee is scheduled for a public hearing. On Monday, February 2, the city council will discuss Greenbelt's Bicentennial Trail and will hear residents' views about the project.

The idea is simple enough: a self-guiding tour of Greenbelt starting and ending at the municipal building, a 40-minute pleasant walk which would also provide a lesson in Greenbelt's history, its architecture and the ecology of its lake park. It would serve to acquaint both local residents and visitors with the story of Greenbelt and, in doing so, help get across the message that the city is a special place, in more ways than one.

### The Plan

The original plan called for a trail passing alongside Center School and its wall sculptures, through the Crescent Rd. underpass and up along the slope behind the GHI brick homes. It would then cross Ridge Rd. and descend through the forest by public trail to Maplewood Ct. and to the lake, where two alternative return routes would be available — a direct one along the south shore and a longer one by way of the dam.

Along the trail two types of marker were planned. First, there would be simple trail markers — stamped metal signs painted in Greenbelt's white and green, bearing the city's flag, an arrow showing the way and the words "Greenbelt Trail".

In addition the plan also called for descriptive markers, giving the story of Greenbelt. The original proposal — drafted by Dr. David Stern — included 12 such signs, each with its distinct heading and text: "Center of Greenbelt", "Center School", "Pedestrian Underpass", "A Planned City", "Hedges and Commons", "Cooperative Housing", "The Forest", "Lakeside Drive", "Greenbelt Lake", "A Lake in the City" (twice) and "A Cooperating Community". They were designed in a distinctive tapered form, 4 feet high and made of thick redwood, each equipped with two transparent windows.

### Carrying it Out

The plan was presented to City Council on April 7, 1975. Soon afterwards the city drafted a budget in which up to \$5,000 were made available for bicentennial-related projects, but actually much less was spent on such activities.

In the meantime city manager James Giese contacted an independent carpenter who was interested in the project and had him construct a prototype marker, keeping track of time and material used so as to obtain a reliable cost estimate. The engraving of the inscription was done by the sign workshop of the National Park Service. Based on the cost of this prototype Giese estimated a tab of \$280 per installed descriptive marker. This would be by far the major expense in the project, since all parts of the trail already exist and the metal signs are relatively inexpensive. It has been suggested that some of the signs might be donated by organizations and individuals, who might then be given credit at the bottom of the text, but no decision on this has been taken.

The prototype marker is on display in the library, together with a brochure describing the trail. Engraved on the marker are the inscription "Greenbelt Trail" and an outline of Greenbelt's "lone pine" flag, which is to serve as the logo of the trail. What is not visible (but contributes to the cost) is an internal design meant to make the sign resistant to tampering and yet easy to repair. The display windows carry a map of the trail route and a short description of the project.

Meanwhile the bicentennial year has arrived and scant time is left if the project is to be ready this summer. The trail is regarded as an asset to Greenbelt, though there are some fears that a great rush of tourists would be attracted by it. Supporters say that this appears rather improbable, considering all the national attractions and parks of the Washington area nearby.

## Our Neighbors

Elaine Skolnik - 474-6060

Rabbi and Mrs. Kenneth Berger, 11 Greendale, proudly announce the arrival of a daughter, Ilana Rachel was born on Jan. 25 weighing 6 lbs. 5 oz. She joins a sister, Avigail, age 2½.

Congratulations to John and Linda Molloy, who are the parents of a son, Sean Phillip, born January 18, at Prince Georges General Hospital.

Marjorie Owens who has lived in Greenbelt since 1958, has joined the Prince Georges County Red Cross Chapter as a case worker. She lives on Northway with her husband and three daughters.

Congratulations to Kenneth A. Snowden, Jr., of Greenbelt, who was named to the Dean's List for 1975 fall quarter at Tennessee State University.

Playing a sensational .736 game, the team of Peg Wainscott and Gretchen Eans easily walked away with top honors at last Friday's duplicate bridge game. Their nearest opponents, Tony Pisano and Alice Kerr, finished 10 points behind. A ½-point behind in third place was the Sid Barnett-Al Skolnik combine. Next game: Friday, February 13, at Youth Center.

Glad to hear that Brian Havekost, 2-G Gardenway, is on the mend. We wish him a speedy recovery.

Prince Georges County Councilman Francis W. White was elected vice chairman of the Metro bus board for a one-year term.

Congratulations to Maria Hanna, daughter of Mr. and Mrs. James Hanna, 102 Greenhill Road, who was a finalist in the recent Holiday Junior Mail Carrier Slogan Contest. Maria finished second in the Prince Georges County finals. She reached the finals when she won first place in the North End School contest, in the 4-6 grades competition. Maria was awarded a United States Stamp Collector's Starter Kit at a ceremony January 23.

Our deepest sympathy to John Gordon and children, Ginger and Jay, 4-L Laurel Hill, on the death of Emilie, his wife and their mother.

### P. G. History Essay Contest

All P. G. county students are invited to enter the poster and essay competition on the theme "Prince Georges County: It's Historical People, Places and Events." Winners in each school will be announced Feb. 27.

Artificial Spring Flowers	from 19c
Bicentennial Paper Tableware	from 89c
Wood Framed Door Mirrors	\$4.97
Pres-a-ply Seals Asstd. Designs	49c pkg.
Porta Files	\$2.79 & \$3.89
Fiberboard Storage Chests	99c
Wild Bird Seed 5 lb Bag	\$1.29
Sunflower Seed 2½ lb. Bag	\$1.29

Central Charge-Bank Americard

## Ben Franklin

Greenbelt Shopping Center

Open 9-9

Mon.-Sat.

What is more likely, they say, is that the trail would put Greenbelt on the map in a modest sort of way and that much of the trail's use would be by residents of the city and the local area — and by the few who have already heard about Greenbelt and wish to learn more. As one local librarian put it, "People come to us all the time asking to learn about Greenbelt. Now we'll know where to send them."



F. JOHNSON  
of

## IN-HOME TV SERVICE

Visits this area 4 days each week and some evenings.

- ✓ 17 yrs. servicing all makes
- ✓ With references, license & bond
- ✓ Published rates & guarantees
- ✓ Always estimate
- ✓ All estimates correct within 10%

Call 588-4166 on

Weekdays or 565-0001 on evenings & weekends.

## Orndorff & Spaid, Inc.

Residential - Commercial  
- Industrial

New Roofing, Reroofing & Repairing

Slate - Built-up roofing, Shingles,  
Metal Roofing, Seamless gutters & downspouts

Licensed - Bonded - Insured -  
Md., D.C., Va.

Free Estimates

937-5911

## UNIVERSITY BOUTIQUE INTERNATIONAL

Our WINTER CLEARANCE SALE is still continuing until all winter dresses, blouses, pants, jackets, shirts are sold so that we will have space for the most gorgeous and beautiful spring clothing. All winter merchandise including our most popular shirts is REDUCED up to 40%. And remember . . . DANSKINS are in our boutique too.

7420 Balt. Blvd.

College Park

Open 11 am. - 6 p.m.

## Moving Sale

### FREE AIR CONDITIONING

For a limited time only, we're offering free air conditioning on any ordered or in-stock, air conditioned '76 Pacer.

### FREE MOOD RINGS

Just come in and test drive any AMC car and we'll give you a mood ring (\$9.95 value) free. Licensed drivers only.

### LOWER PRICES . .

We would rather sell them than have to move them, so prices have been reduced on all Gremlins, Pacers, Hornets, and Matadors in stock.

LOU TOLLISON'S

## ORBIT AMC - JEEP

4301 RHODE ISLAND AVENUE, BRENTWOOD, MARYLAND

864-4747

NEW Location

2000 Bright Seat Road, Landover, Md.

341-7300

Beltway Exit 32

Directly Across from the Entrance to Landover Mall

## Kash, Inc. Realtors

"WE MAY CLOSE, BUT WE NEVER DOZE. CALL ANYTIME"

IF THIS BE TREASON make the most of it but we have a 2 bedr. brick home with attic, with washer, 3 a/c's, Very clean. Garage included, \$28,500.

NO "PAINE" here Thomas, just common sense This always has to prevail when you see a 4 BR rambler with rec. room in basement for all year and a covered patio for the summer. Offered on all terms. Call 345-2151 anytime day or night. \$42,500.

CROSSING THE DELAWARE? No need, we have a very fine 2 BR 2 bath home that is selling for under the appraisal! Garage included! \$30,750 on VA and conventional terms. \$30,750.

BY GEORGE! We almost forgot, we have just listed 5 acres of land with trees that has 700 feet of southern exposure — 200 feet of road frontage. If you have been waiting for a tract of land to build a fine home on this one could be just what your Mount Vernon has been waiting for. Call 345-2151 anytime day or night.

FOR COMPLETE SERVICE AND HELP ON VA AND FHA FINANCING, COME TO KASH REALTOR NEAR THE CORNER OF UNIV. BLVD. AND RHODE ISLAND AVE. WE SPECIALIZE IN HANDLING YOUR HOME PROBLEMS. ANY TYPE OF HOUSING PROBLEM. — LET US HELP YOU WITH IT. OR CALL 345-2151 ANYTIME SEVEN DAYS A WEEK FOR ONE OF OUR INFORMED AGENTS TO DISCUSS YOUR HOUSING SITUATION IN THE PRIVACY OF YOUR HOME. LET KASH HELP YOU.

## KASH'S HOME KOMMENTS

BUY CENTENNIAL! Look over this list of Homes! There is one for every taste and pocketbook. But, first of all note:

BIFF! SOLD! Lakeside  
BANG! SOLD! Boxwood  
SMASH! SOLD! Lakewood  
CRASH! SOLD! Woodland Hills

CRASH #2 SOLD! Woodland Hills

PAUL WILL REVERE you if you buy this 3 bedroom, 1½ bath, cent. A/C, brick rambler in Carrollton. Every feature included in this fine home. Rec. rm. in basement, on all terms \$48,000.

ONE IF BY LAND and you will land in a beautiful one bedroom END APT., that is beautifully turned out when you see the w/w carpet and year old washer, also new light fixtures and redecorated! All utilities included in monthly pymt., only \$11,800.

TWO IF BY "SEE" and you will not be at sea once you see this 2 bedroom, 2 bath condo apt. with sep. din. rm., washer, dryer, dishwasher and fam. rm., lots of space (1200 sq. ft.). Take over pymts. of \$303.00 a month and condo. fee that includes all utilities in \$4525 down. Owner will help with down pymt. \$33,900.

PUT YOUR JOHN HANCOCK on the line and buy this fine 3 bedroom brick rambler with rec. rm. in basement, washer, dryer, a/c & w/w carpeting included, offered on all terms, \$40,900.

RED flags are waving for you to see this fine 2 bedroom home on a dead-end street. Beautiful decor, f/f ref. & washer, only 2 years old plus 2 a/c's, w/w carpet. Woods in back! Only \$15,900.

WHITE is not clean enough to describe this beautiful 4 bedroom, 2 bath, cent. a/c home with rec. rm. in basement near Capital Plaza, Lge. (12'x12') din. rm. & 12'x12' kitchen. All modern appliances including dishwasher, disposal, washer, dryer. Most improvements 2 years old. All terms \$43,900.

BLUE CHIP is this 3 bedroom home close to Greenbelt shopping mall. New Sears kit. with modern cabinets, washer, dryer, 2 a/c's, beautiful panelling. Woods in back. All utilities except elect. & phone included \$17,900.

BEN BE FRANKLIN in the hot stove league, we have a very fine 3 bdr. rancher in Riverdale Park with eat-in kit., d.d. f/f ref., washer, dryer, 2 a/c's, many other improvements. VA or Conv. terms \$43,900.

WHEN IN THE COURSE OF HUMAN EVENTS it becomes necessary to get started, we can humbly but proudly state we have another very fine 1 bedr. apt. at a reduced price of \$11,200 to keep you, washer, dryer, a/c included.

NO BUNKER HILL to climb but you can see the government farm within a short walk. See this 3 bedr. completely remodeled home with new kit. & bath, plus floors sanded, washer, dryer, and 2 a/c's. All utilities included expect elect. & phone. \$18,250

THE RED COATS ARE COMING. We have the hideaway on 9.84 acres. Custom built 4 bedr. rambler high on a hill. Many extras, apt. and sep. kit. If you wish you can have horses, there is a home for them (a 2 stall barn). Call 345-2151 about the price on this one.

"THE SHOT HEARD ROUND THE WORLD." We have another 2 bedr. home with price reduced to \$15,300. New appliances in kit. & matching cabinet, all in copper tone. Big a/c 17-500 B.T.U. Many other extras call 345-2151, anytime day or night for information. Quick settlement! We have the financing if you have the time \$15,300.

## KASH INC., REALTORS

Univ. Blvd. & Rhode Island Ave.

345-2151

LET KASH HELP YOU!